



PROUDLY INTRODUCING

Powerful Output Power 300W(Max.)

Virginal Care

Spark Free
Technology Intensive RF Device
CET, RET & Multipolar for face & body
Ideal 470KHZ Freq.



Why we need Vaginal Rejuvenation device?



Interested in having vaginal rejuvenation

- According to Australian Study conducted in 2014 -



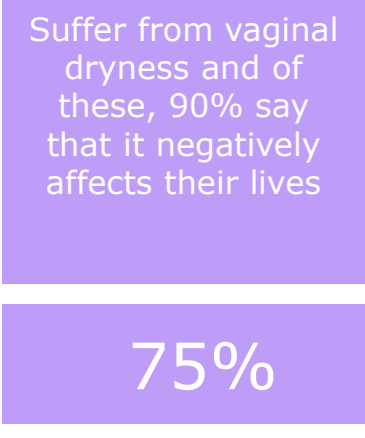
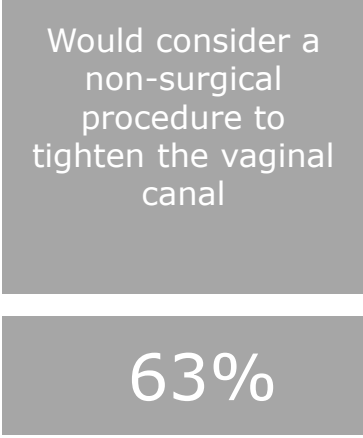
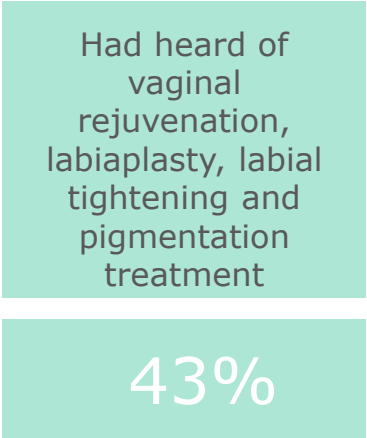
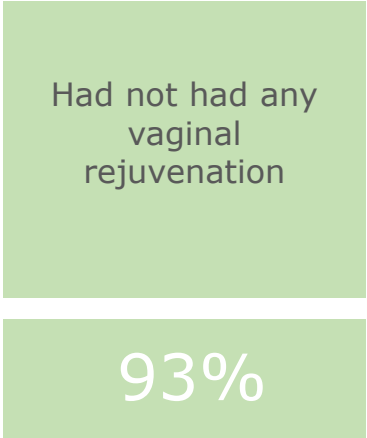
The number of procedures of Vaginal surgery
- Constituting the largest increase in the number of procedures

- According to International Society of Aesthetic Plastic Surgery(ISAPS) -

Between 2014 ~ 2015

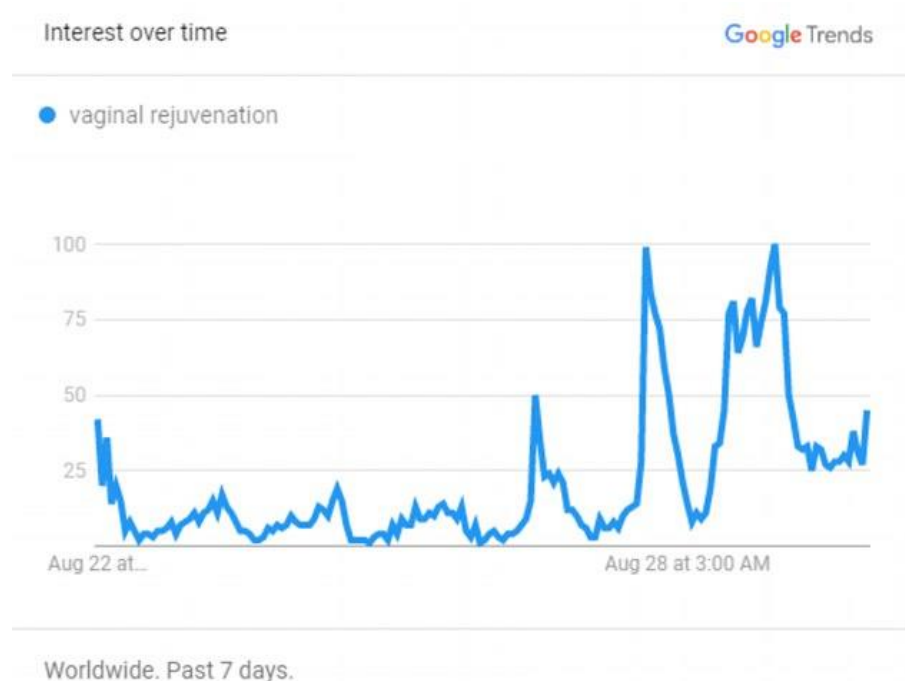
Women's intimate wellness is a rapidly growing market need

In a survey of American women



With celebrities like Farrah Abraham, the 26-year-old Teen Mom sharing photos on Instagram and chatting about her procedure of vaginal rejuvenation, the procedure is constantly gaining popularity among women of all ages and ethnicities.

Within hours, Google searches for 'vaginal rejuvenation' had sky-rocketed.



What is VRS?

Vaginal Relaxation Syndrome

- **Loss of the optimal vaginal structure** after child delivery and natural aging

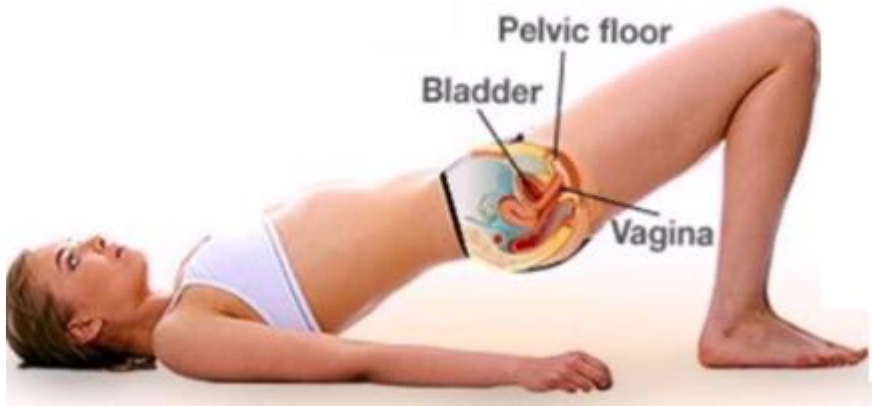


Loose vaginal -> decrease or loss of sexual gratification

Other Symptoms

- Sexual pleasure decreased overtime or after giving birth
- Vaginal dryness
- Non voluntary urinary leakage especially when you cough, laugh or exercise

Various VRS treatment options in the market



behavioral (Kegel exercises)

Non-invasive, Safe
Limited efficacy



pharmacological therapies
(hormonal, tightening creams
and sprays)



various invasive surgical
procedures

Much Better Final Result
High Price
Associated risk
Recovery time

Non-invasive Vaginal care in clinic

Target: Non-invasive, Non-hormonal treatment, No Anesthesia

Intima Laser (Fotona laser)
2940nm Er:YAG laser



3 treatments
about a month
apart

USD1,500 for treatment series
of 3 sessions

FemiLift(Alma laser)
CO2 laser



3 treatments
about a month
apart

USD3,000 for treatment series
of 3 sessions

TermiVa
Radiofrequency



3 treatments
about a month
apart

USD2,500 ~ USD3,000 for
treatment series of 3 sessions

Fully Generate diathermy heat all layers with CET and RET



**CET
Virginal Care**



**RET
Virginal Care**

Vagina's dryness

Slight incontinence of urine

: In terms of urine loss in the effort or automatic loss of urine that happens in several women, the results are significant. The slight loss of urine that observed in women after some age or after difficult and painful labors is improved too.

Sexual contact is improved

: vaginas mucous membrane concern the vaginas dryness that collagen restored vaginas viscosity and moisture, the collagen and the elastin fibers of vagina, the difficulty on sexual contact is improved. So sexual pleasure is increased

Dyspareunia (symptom of a physical or psychological disorder, defined by persistent or recurrent genital pain that occurs before, during, or after sexual intercourse)



Sineson Virginal cure result

- The positive effects of treatment are evident as soon as the treatment is over.
- In about one week women who had been cured from Sineson device will be able to get sexual contact, to understand the difference in the previous situation as well as to feel the moisture humidity in the vagina to return to normal levels.
- We can't say that urinary leakage accidents completely eliminated but it improves at least 80%.
- The therapies results with Sineson device are presently, women will feel the return of vagina's mucous at normal levels and those suffering from slight loss of urine will have very good results from the very first sessions and when this is repeated after 6 months the results will be amazing
- The repeatability of the treatment after 6 months gives us even better results so that all women are pleased.

Benefit of Sineson Virginal cure

Very simple and safe care – During the treatment, electrode should be slowly turned. And it is very safe and no side effect is found

Non Invasive and No Downtime



No disposable items –patient buy one electrode per each of CET and RET and reusable after sterilization with alcohol

No pain – Sineson virginal care can be performed six to eight weeks after childbirth



Sineson operating procedure

Treatment around 20 to 30 minutes with CET and RET Elect



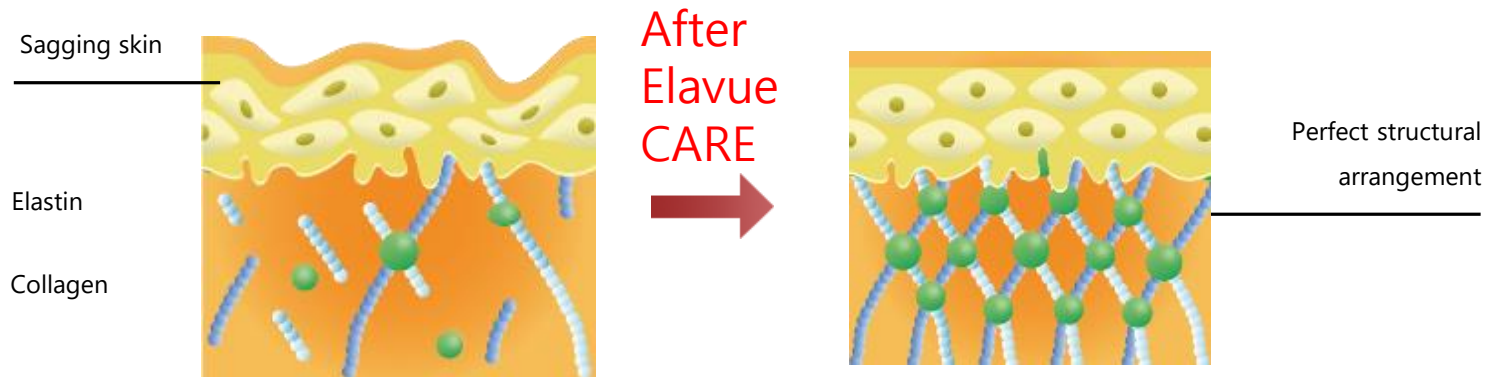
Required **2 ~ 3 sessions with 10 days interval** so it is conducted for 30 to 40 days and **it lasts six months**

Results come in about one month

LAST



VAGINAL Rejuvenation



Damage old weak collagen

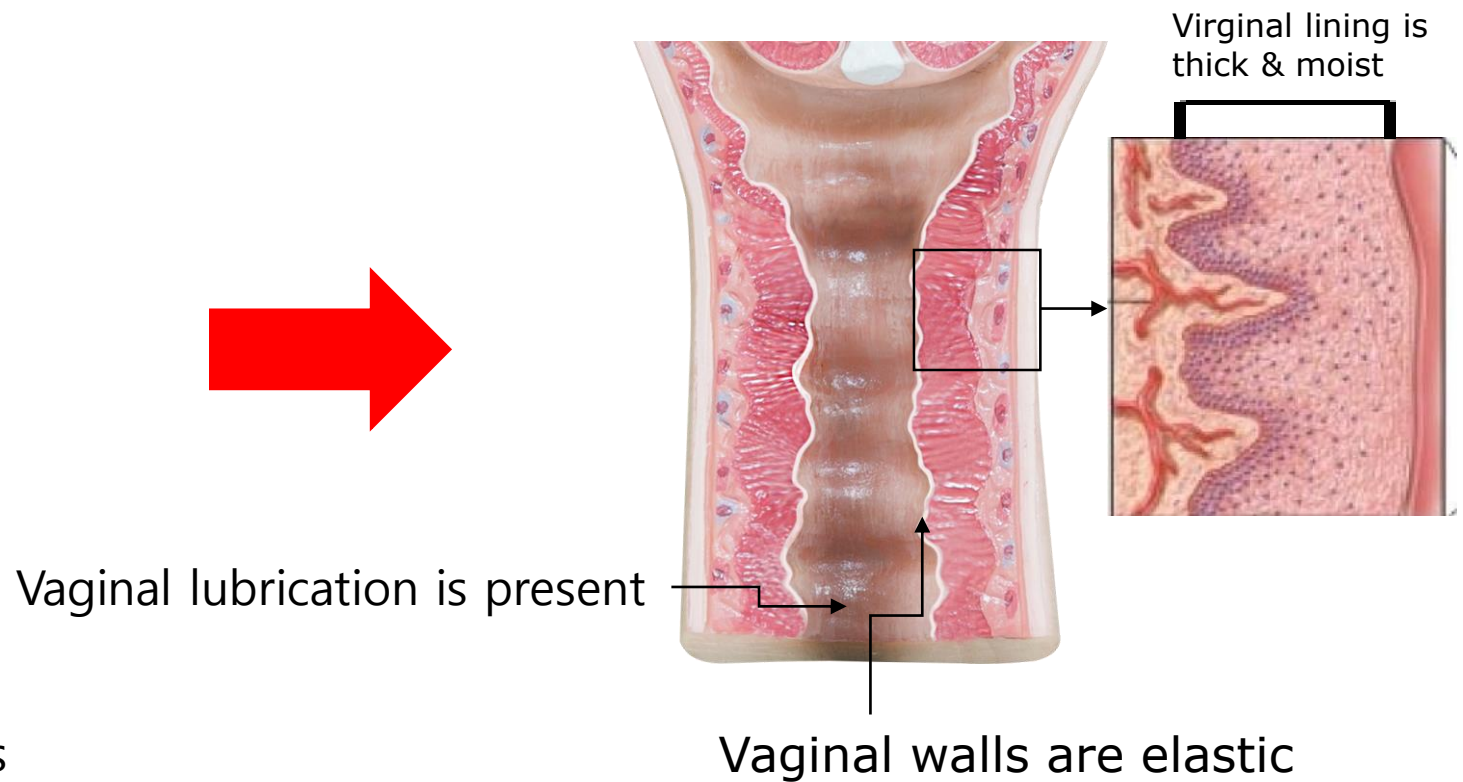
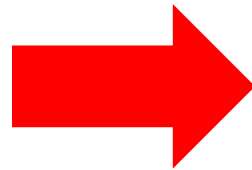
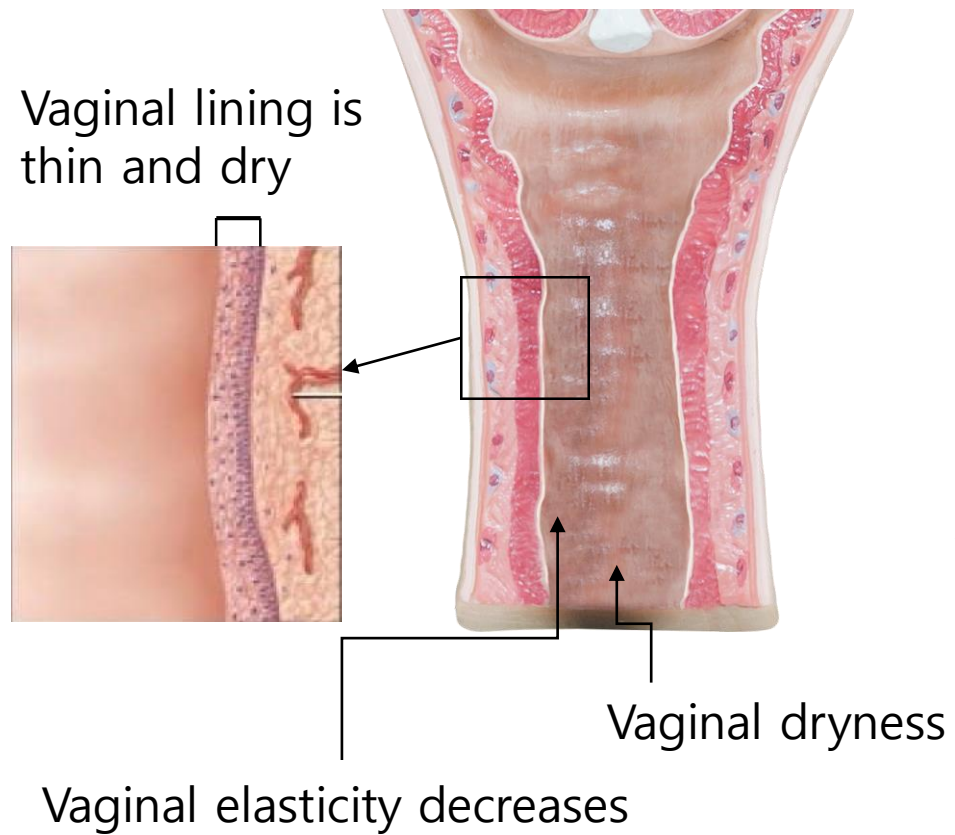


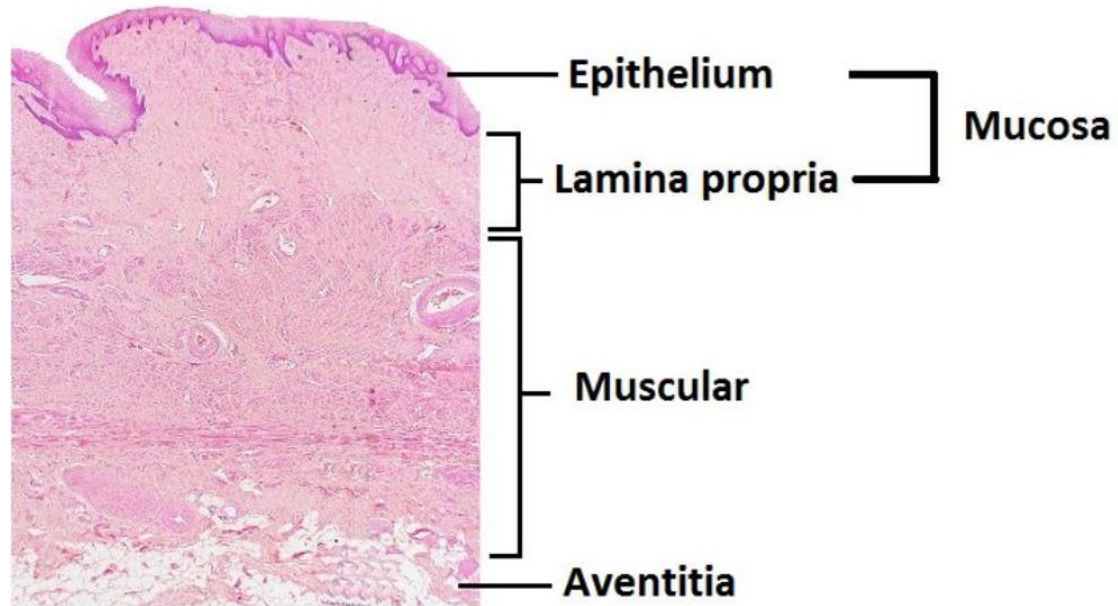
Activate a generating neo collagen and elastin



Skin tightening, lifting, thicker dermis layer effect

SINESON VAGINAL Rejuvenation





Mucosa: Outermost layer, which comes in contact with vaginal electrode and has nothing to do with vaginal tightness. It can be moistened by well blood circulation with RF care.

Muscular: Layer which is in charge of vaginal tightening. By collagen regeneration in that area with SINESON care, it can be tightened.

Recommended Power setting per type of electrode

Operating time: 20 min. ~ 30 min.

Type of Electrode	Intensity	Power Display Variable depending person	Hot Feeling (without covering)	Hot Feeling (covering condom)
RET C Mode	50	35W ~ 40W	Slim Hot	Hot feeling decrease up to 50% (enough heat under of intensity "100")
	70	51W	Proper	
	80	60W	Proper	
	90	95W ~100W	Very hot	
CET Normal Mode	50	50W ~ 54W		Same feeling with No covering condition
	60	55W ~ 60W	Very Hot	
	70	100W	Slim Hot	

RET Virginal Electrode – Insert type



CET Virginal Electrode – Insert type



Treatment for external genitals – inserting 30mm electrode



1'ST CET virginal electrode – 10 min.



2'nd with 30mm electrode Treatment for external genitals – 5 min.



3rd RET virginal electrode – 10 min.



Covering with Condom – it decrease heat generating and its effect

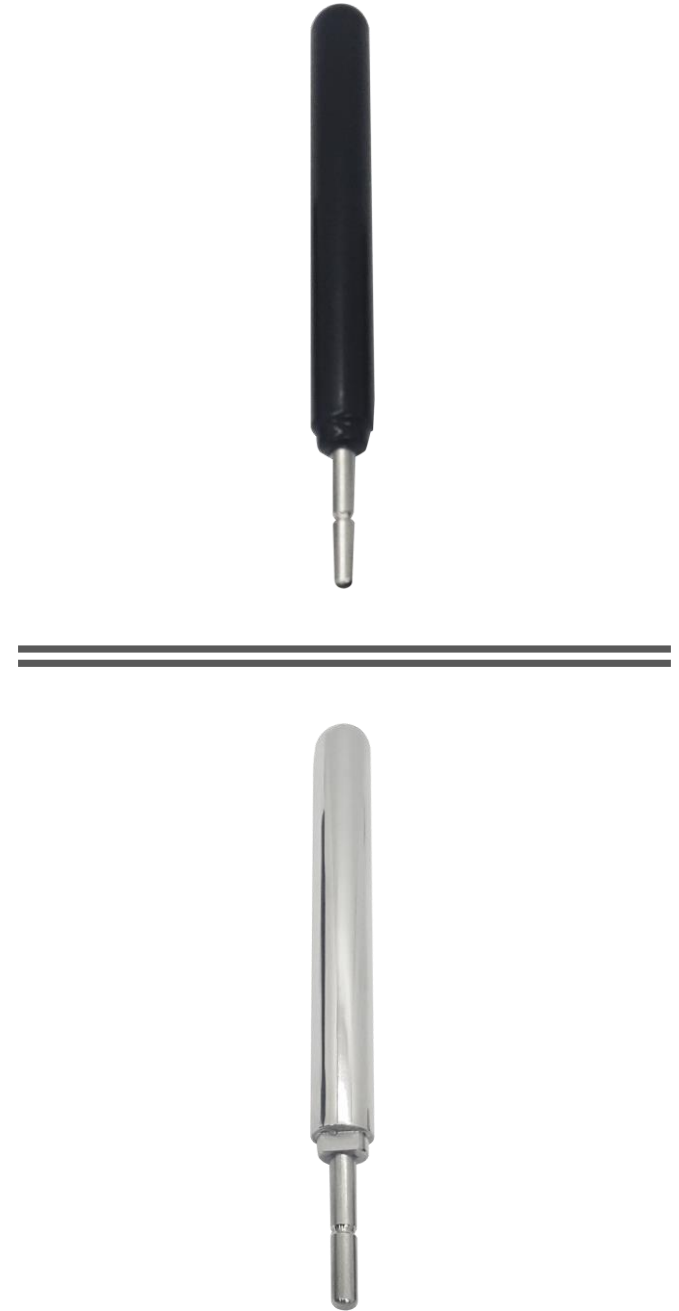




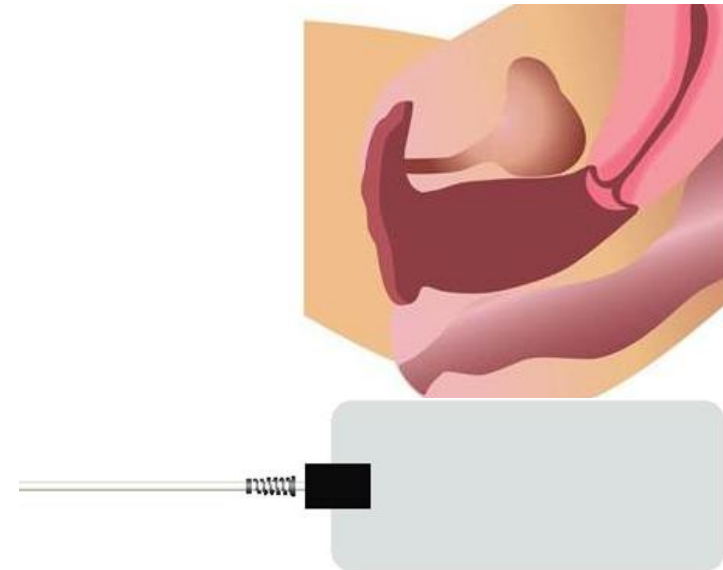
Recommendation:

- * Treat without condom for effective diathermy generating
- * At the first treating before insert, clean with alcohol
- * Charge the electrodes cost per every patient so use their own electrodes per every treatment and dispose them after finishing 5 to 10 sessions care
- * To fully tighten all layers, it is recommended to use CET and RET together.

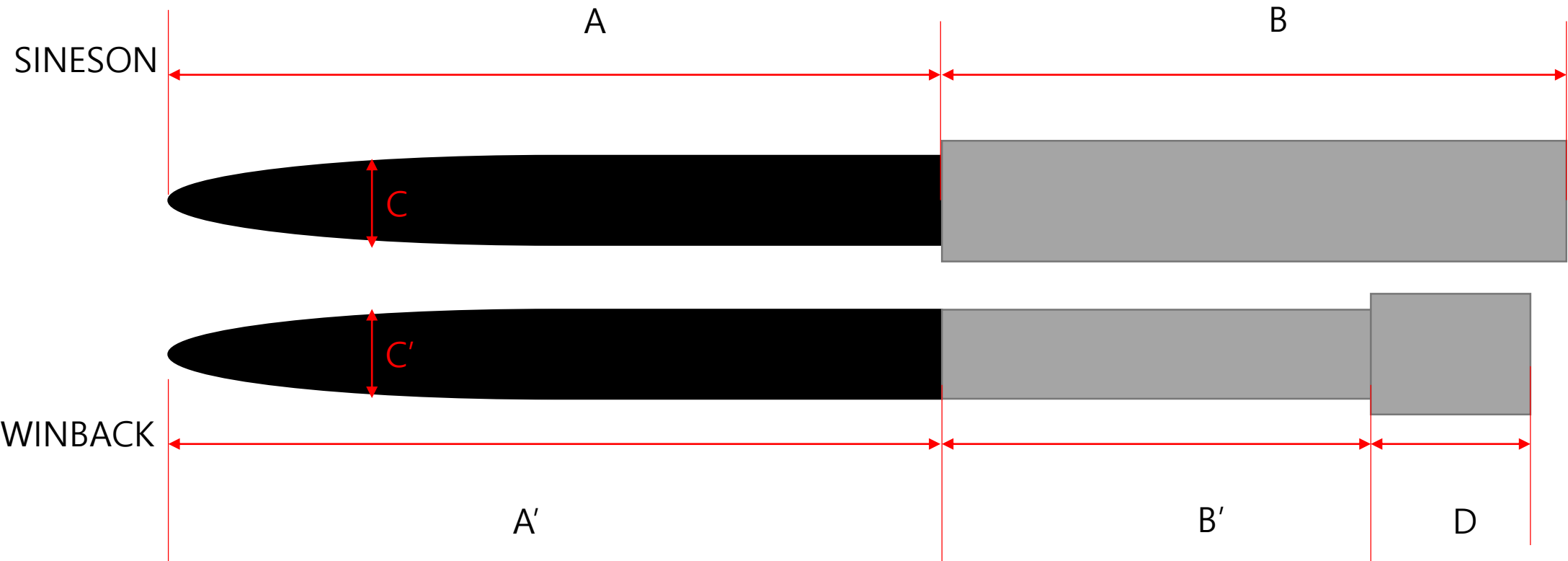
**Recommended
to use personal
virginal
electrode**



Covering with Condom and patient plate location

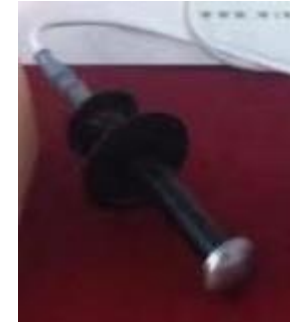


SIZE Comparison of SINESON and WINBACK



PART	Length
A, A'	120mm
B	107mm
B'	70mm
D CET, RET	2mm
C, C'	RET-15mm CET-16mm

WINBACK Virginal Type



Professional Use



SINESON Metal case



SINESON Plastic case

OPTION



Home Use



ELAVUE – 11W



Everyday 5 min.