

# ComboWAVE

BODY CONTOURING & PAIN CARE



Radial Shockwave

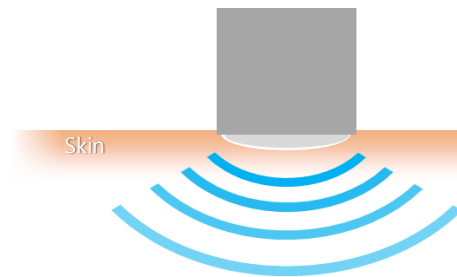


## ◆◆ Extracorporeal ShockWave Therapy(ESWT)

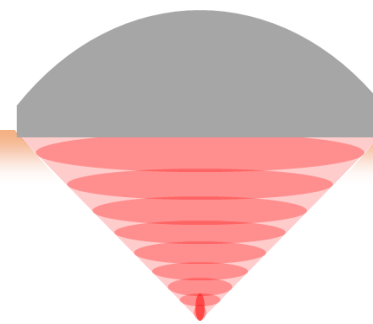
ESWT is a non-surgical and non-invasive procedure that transmits shock waves generated from the outside into the body.  
Initially used for physical therapy but it has been used for cosmetic purposes such as body contouring recently.



Combo WAVE



Radial Type ESWT

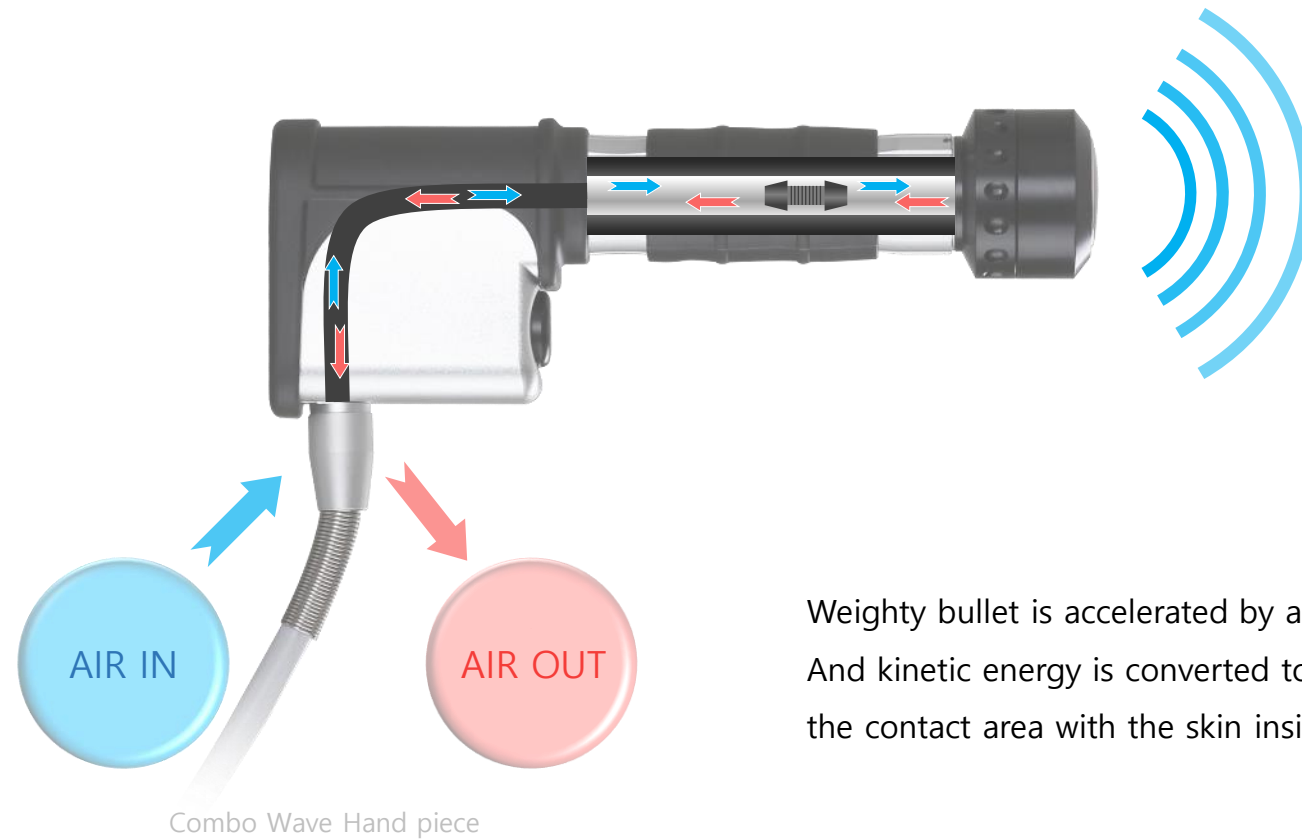


Piezo Type ESWT



REMFAT

## Radial Type



Weighty bullet is accelerated by air pressure to transmit kinetic energy to the head. And kinetic energy is converted to shockwave in the head and spread radially from the contact area with the skin inside the body.

## Indication

### Physiotherapy

- Pain relief
- Muscle pain treatment
- Decalcify treatment
- Damaged joints and ligaments treatment
- Inflammatory treatment
- Nerve fiber stimulation

### Common

- Increase blood flow
- Lymphatic drainage
- Angiopoiesis
- Cell stimulation and regeneration

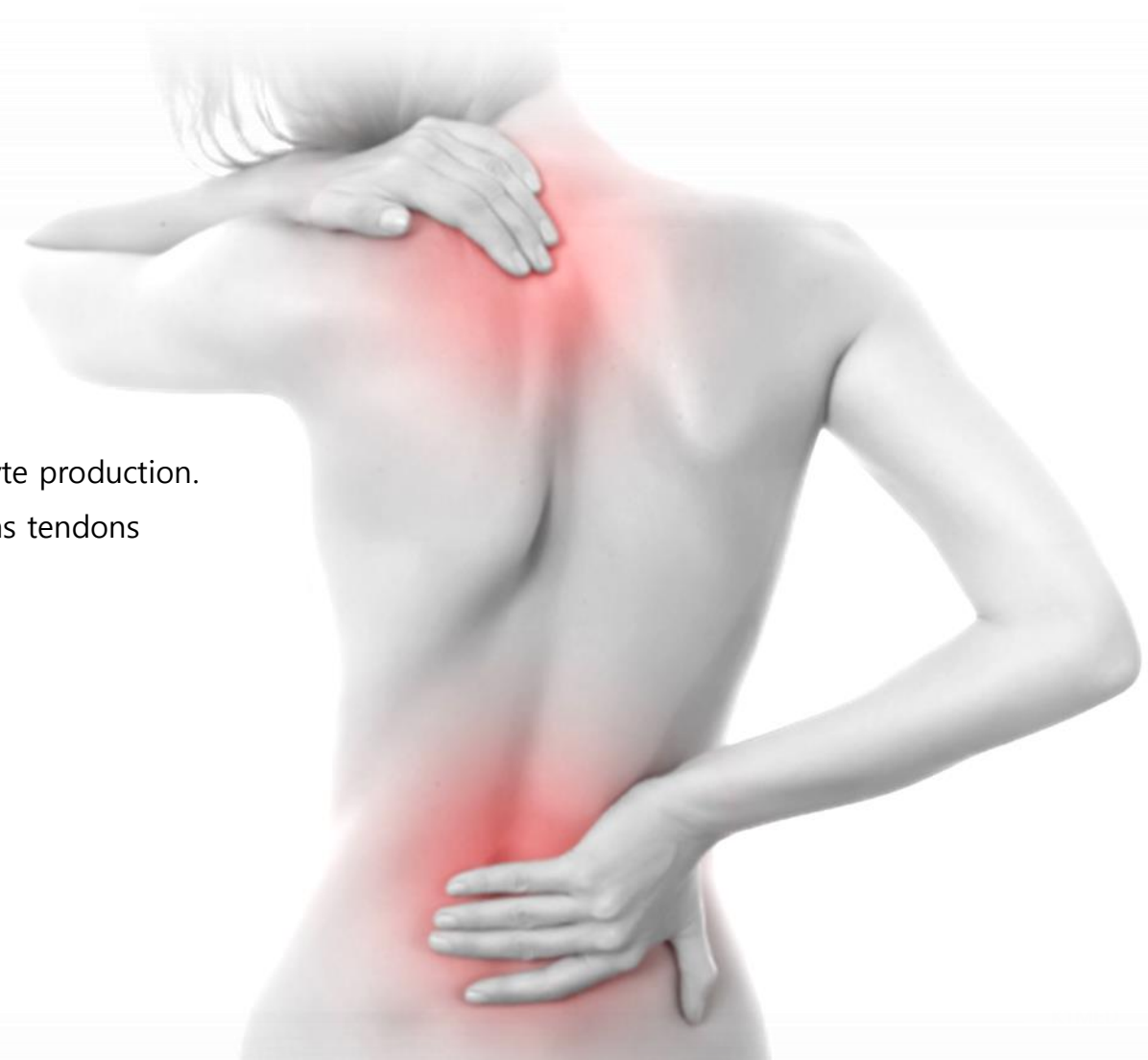
### Aesthetic

- Cellulite reduction
- Selective destroy fat cell
- Skin tightening
- Collagen regeneration

## ◆◆ Pain relief

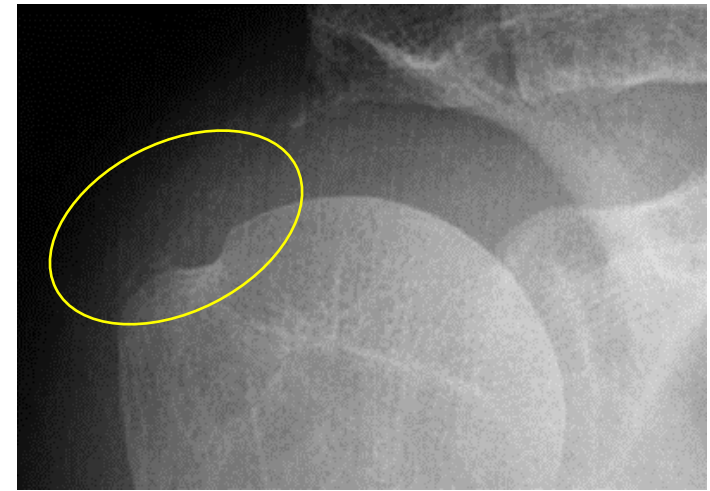
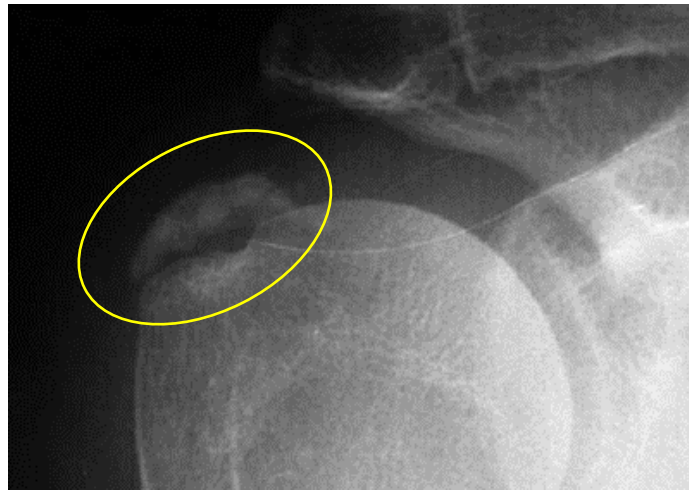
It is one of the basic effects of ESWT that releases the knotted muscle by delivering energy to a tense muscle and ligament around the muscle. Furthermore, it reduces pain by stimulating the nerve that delivers the pain signal to the brain.

Through a process called cavitation, ESWT stimulates fibroblast and tenocyte production. Fibroblast or tenocyte cells make up your body's connective tissues, such as tendons and the fascia.

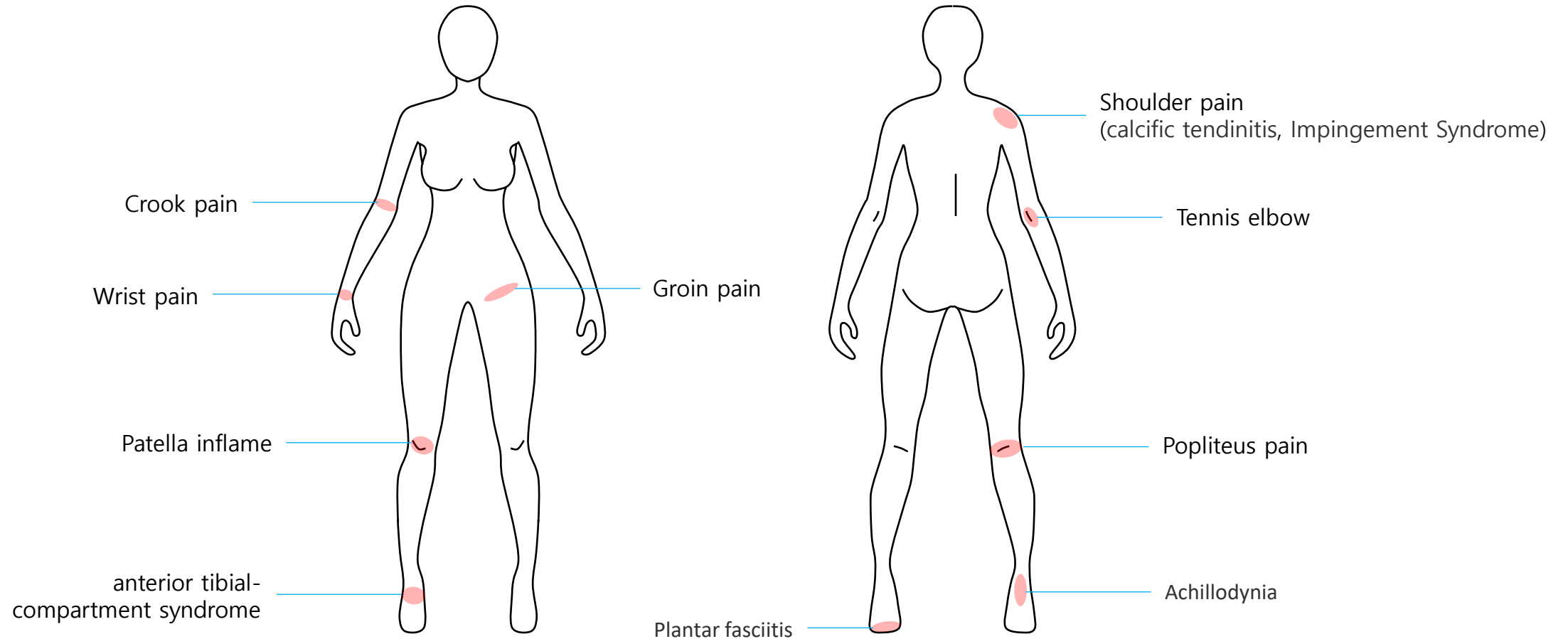


## ◆◆ Motion recovery

Calcific Tendinitis is the disease that caused by accumulation of the calcific material. This material is accumulated due to bad blood circulation which is normally caused by Aging around joint, and excessive rotating activity and so on.

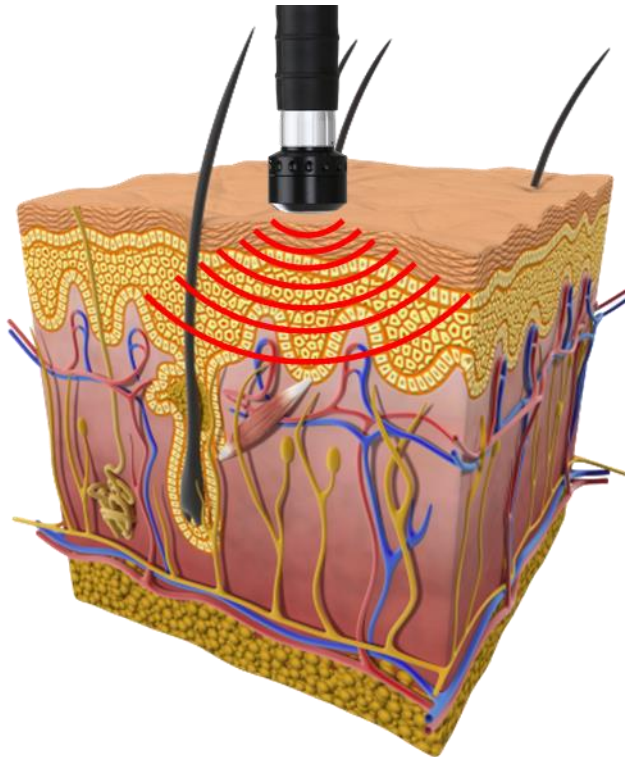


## Indication



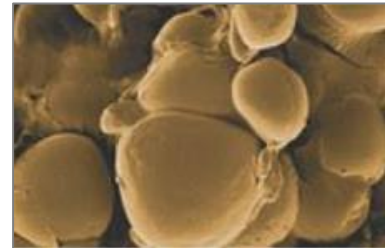
## Aesthetic

### ◆◆ Destroy fat cell

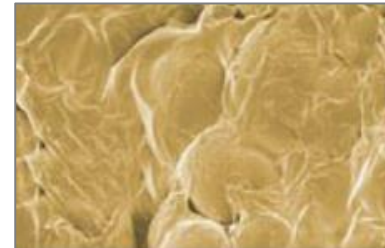


Shockwave induces cavitation effects without damage on skin & organs, and this destroys adipocyte selectively.

It is non-invasive treatment and it serves multiple obesity care effects.



before



During



After



# Aesthetic

## Cellulite



It is common symptom that over 85% of women all over the world suffer and it is often generated on thigh, buttock, abdomen. Due to transmutation on adipocyte cell, lymphatic & blood circulation don't rotate well. As a result, subcutaneous fat, liquid inside a body, collagen fiber are combined together, and it makes uneven agglomerated skin surface.

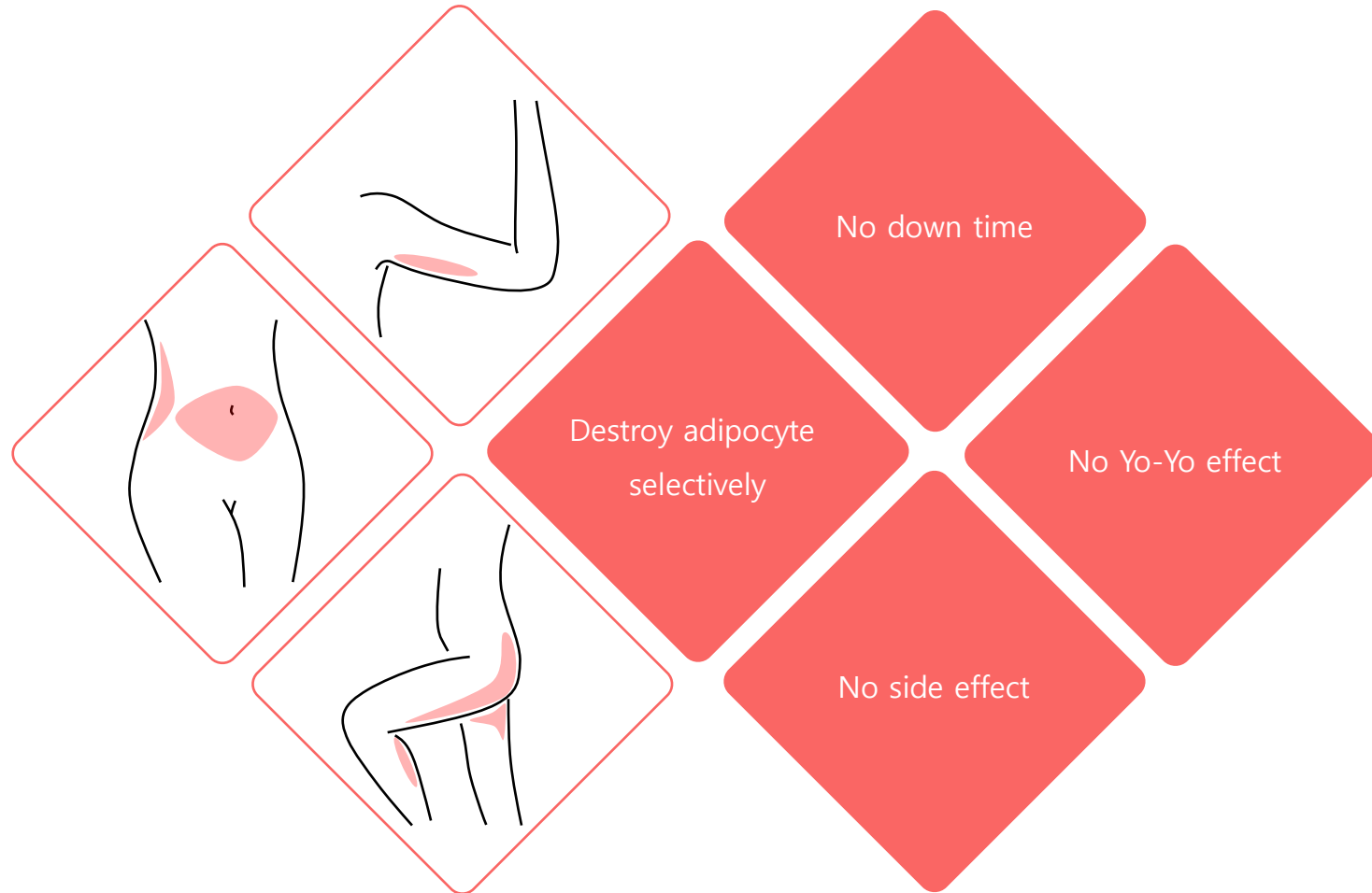
Blood speed  
and circulation  
is activated.

Increase of O2  
generation.

Expansion of  
blood vessel

Massaging hard  
& soft tissue.

## ◆◆ Destroy fat cell



Combo WAVE  
(CBW-7100)

Component

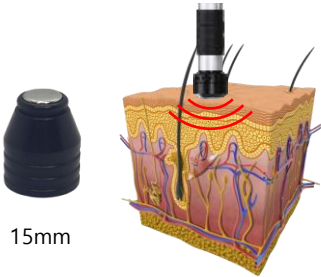


Main body

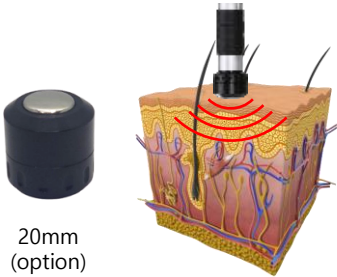


ESWT Handpiece (dual)

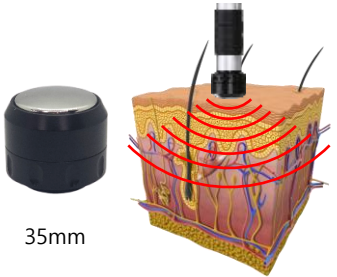
Head (3types)



15mm



20mm  
(option)

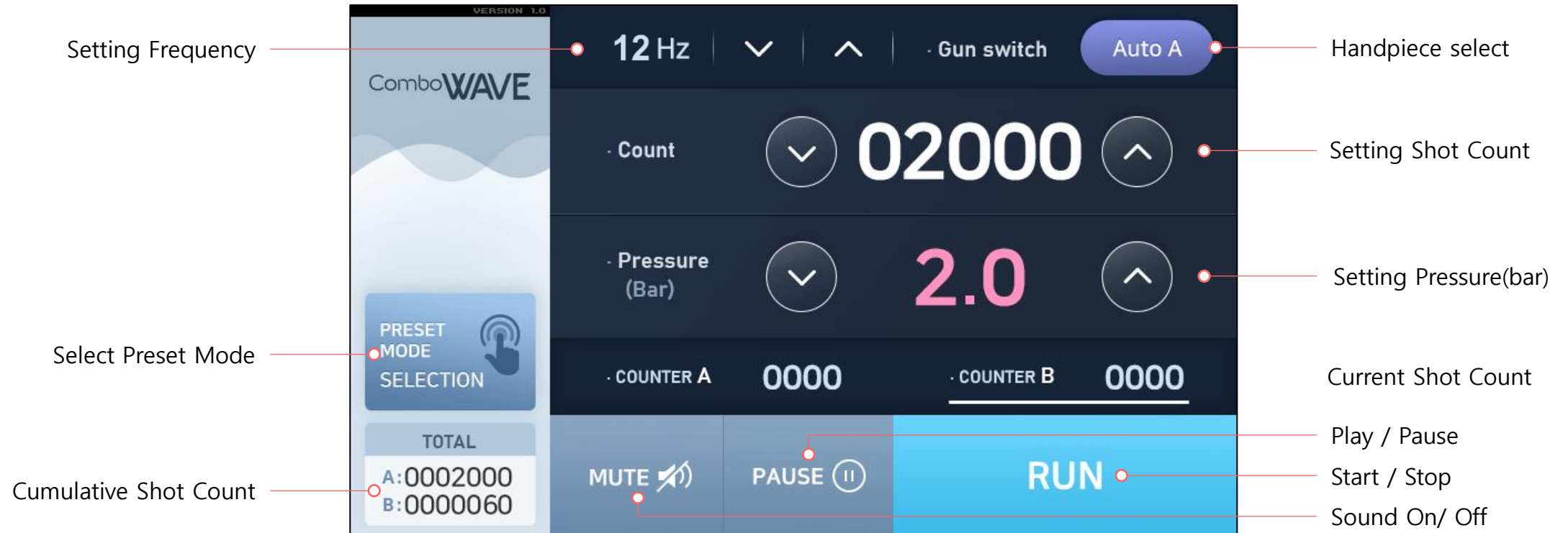


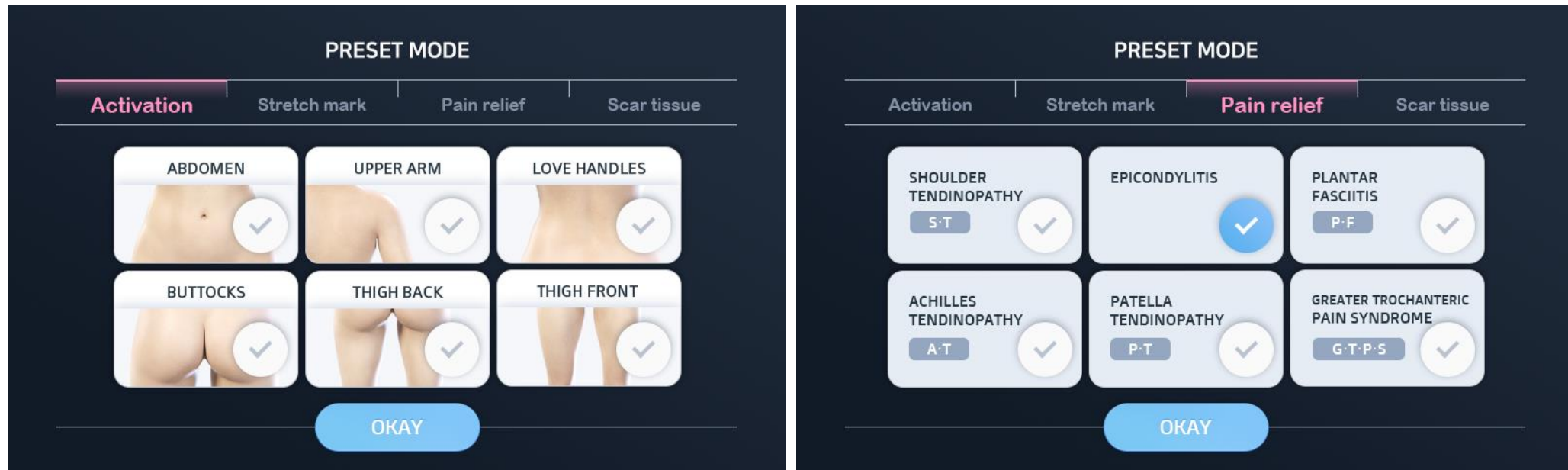
35mm

Bullet and Pipe



# GUI





**Preset Mode** : Activation / Stretch mark / Pain relief / Scar tissue

# Operating

ComboWAVE



Side / Love handles



Shoulder



Elbow



Thigh



Calf



Ankle



Sole / Heel

# Specification



|                   |                          |
|-------------------|--------------------------|
| Air Pressure(bar) | 1~5bar (0.1 step)        |
| Frequency         | 1~12Hz (1Hz step)        |
| Head              | 15mm, 20mm(option), 35mm |





