

**REMOVE FAT**

**RENFAT**

**PIEZO Cell Type**

HFES - High Focused Extracorporeal Shock Wave Therapy



**NO HEAT, NO FROZEN**

**- NO BURNING, NO Bruise, No Pain**

**REMOVE FAT YOU WANT TO  
REMOVE**



**ALL OBESE TYPE AVAILABLE, DIRECT FAT REMOVING SYSTEM**



## 635nm LLLT

2009

Erconia Laser  
ZERONA



## World Body Sculpting Trend

2017

Erconia Laser  
Verju



## Coolsculpting

2010

Allergan  
Zeltiq



## High Frequency RF 27.12MHZ

2013  
BTL  
Vanquish



## 1060 NM Diode Laser

2015  
Cynosure  
SculpSure



## Electro-Magnetic effect

2018  
EMSculpt



2019  
K1MED Magculpt

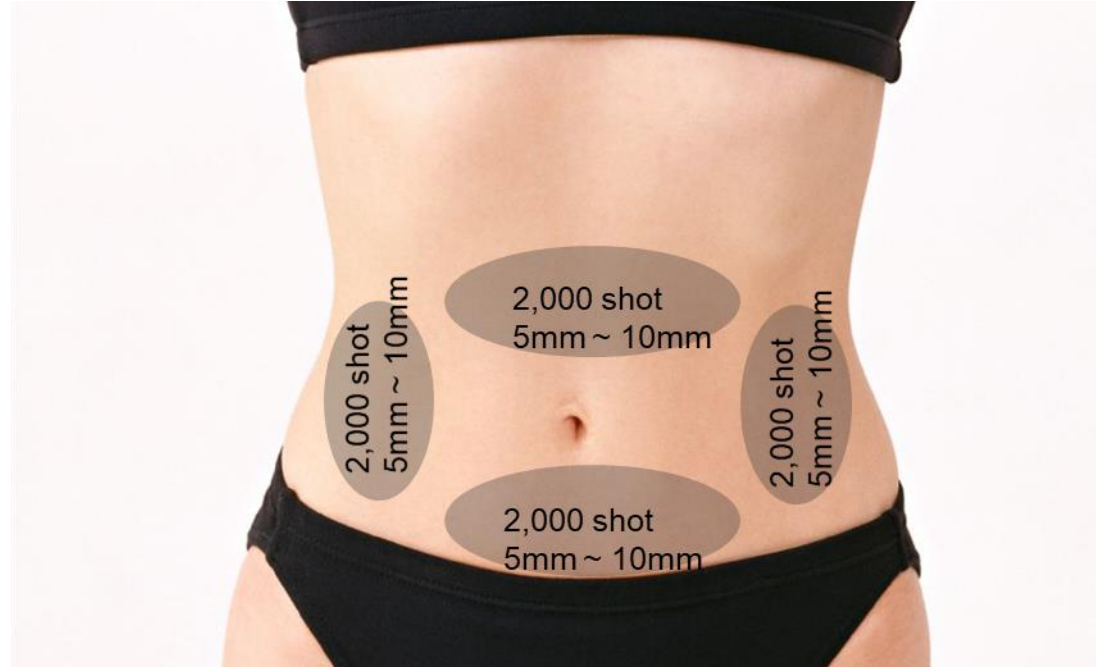


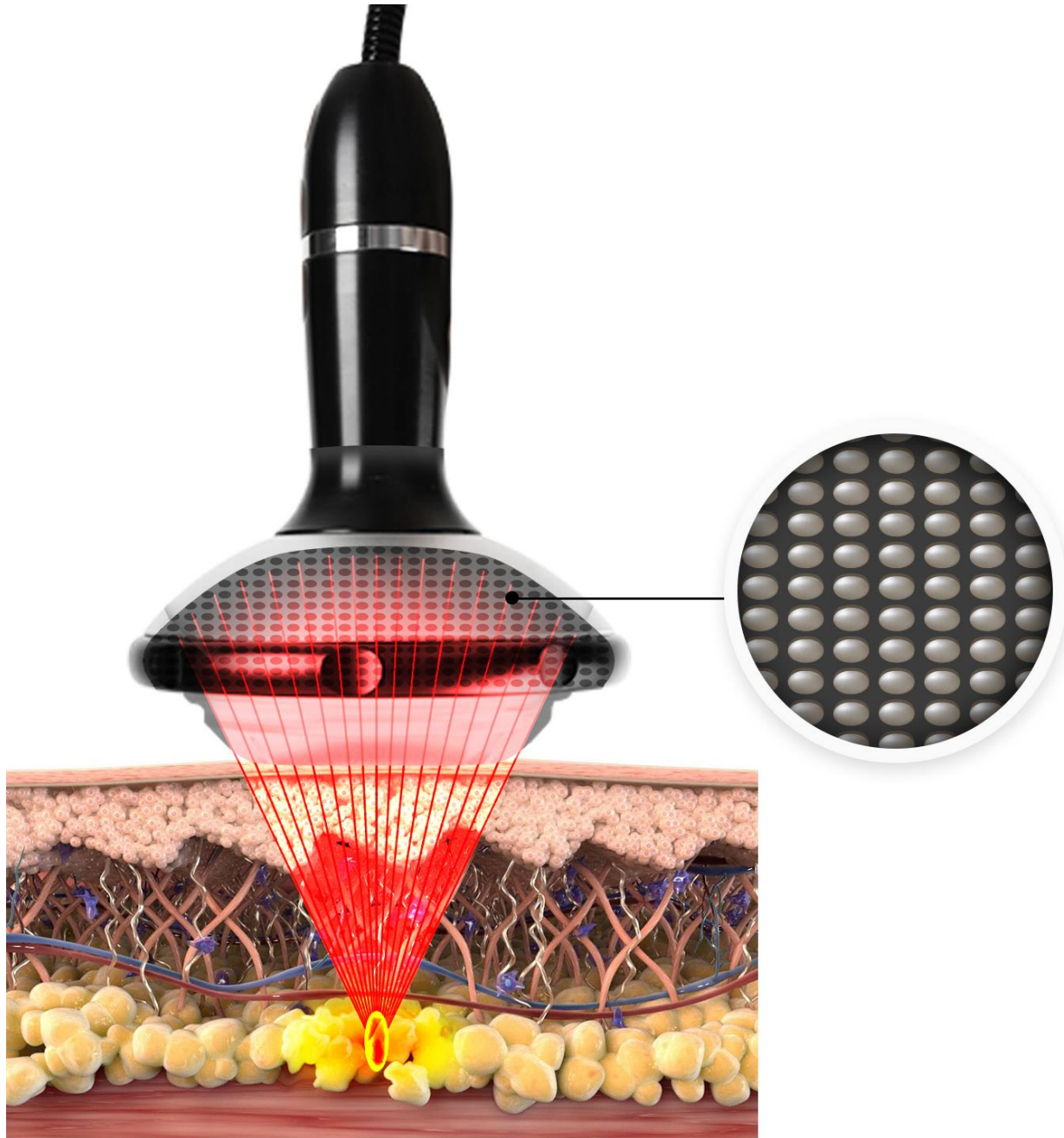
## COMPARISON OF THE MOST POPULAR BODY CONTOURING BRANDS IN KOREA



	REMFAT	ULFIT	Vanquish	Liposonic
Manufacturer	HFES Korea K1MED	HIFU Korea Classys	RF 27 MHZ U.S.A BTL	2MHZ HIFU U.S.A SOLTA Medical
End User Price	USD22,000 ~ USD23,000	USD20,000 ~ USD23,000	USD55,000	USD80,000
Depth	5, 10, 20, 30, 35mm	6mm, 12mm	Required the additional Applicator for thigh USD14,000	11, 13, 16, 18mm
Function	Destroy Lipocyte Increase Elasticity	Approved as Skin elasticity No effect for fat removing effect	Induce the apoptosis	Demolish Lipocyte
Technology	Destroy fat with High Focused Extracorporeal shock wave	Ultrasound massage effect	Induce the lipocyte apoptosis with RF Heat	Melt fat with HIFU
Pain	No pain		Patient can't move whole of operating to keep 2cm distance between the cover so patient feel so inconvenient	anesthesia cream
Session	Once a week	Once a month	Once a week	
Disposable part limit(around palm size)	Over 2,500 areas 1 shot – USD0.0012	150 areas 1 shot – USD0.0183	No disposable	10 persons
Shot for one area(around palm size)	2,000 ~ 3,000 shot	400shot Treatment charge: USD200		All abdomen – USD900
Disposable part limit	5 million shot - limit	60,000 shot – limit USD1,100		525 shot – limit 10 persons / 1 H/P
<b>Abdomen</b>	8,000 shot, 20 min. USD0.0012X8,000= <b>USD9.6</b>	800 shot ~ 1,000 shot 45 ~ 60 min. USD0.0183X1,000= <b>USD18</b>	<b>30 ~ 45 min.</b>	<b>1 hour</b>

## Abdomen treatment with REMFAT



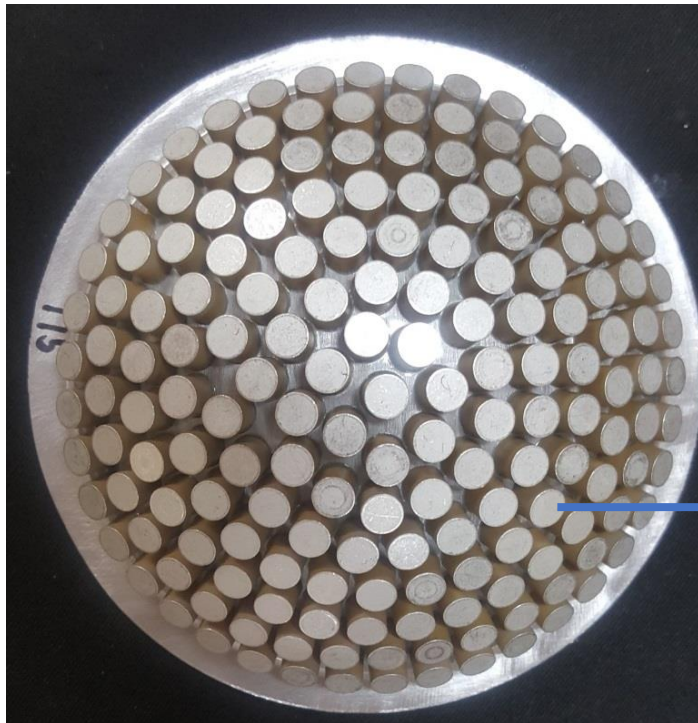


## PIEZO CELL TYPE

Individual almost 200 pcs of Piezo  
electrons generate shockwaves and it is  
highly focused on the one point  
Effectively

## REMFAT - Reverse Piezo Effect

When the piezo electrons are applied high voltage, the molecules inside are moved so it is temporarily expanded and returned to its original shape, at that time high concentrated extracorporeal shock wave is generated. It is reverse piezo effect. Piezo electron is the important part to decide the energy strength and its stability



Almost 200 pcs of PIEZO electrons are evenly **parallelly** installed

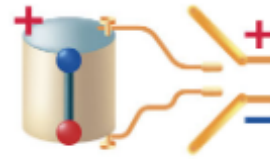
One shot, 8,000 high voltage is applied to the individual almost 200 pcs of PIEZO electrics at the same time, **so strong extracorporeal energy** is generated



# Inverse Piezoelectric Effect - REMFAT

Piezo Electric

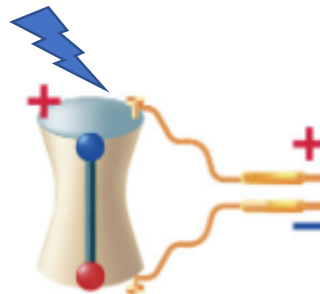
: + and - molecules are well arranged inside of Piezo Electric



Apply 8,000V

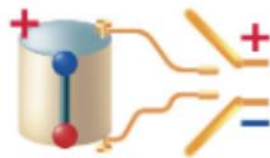
: Piezo Electric is expanded.

8,000V

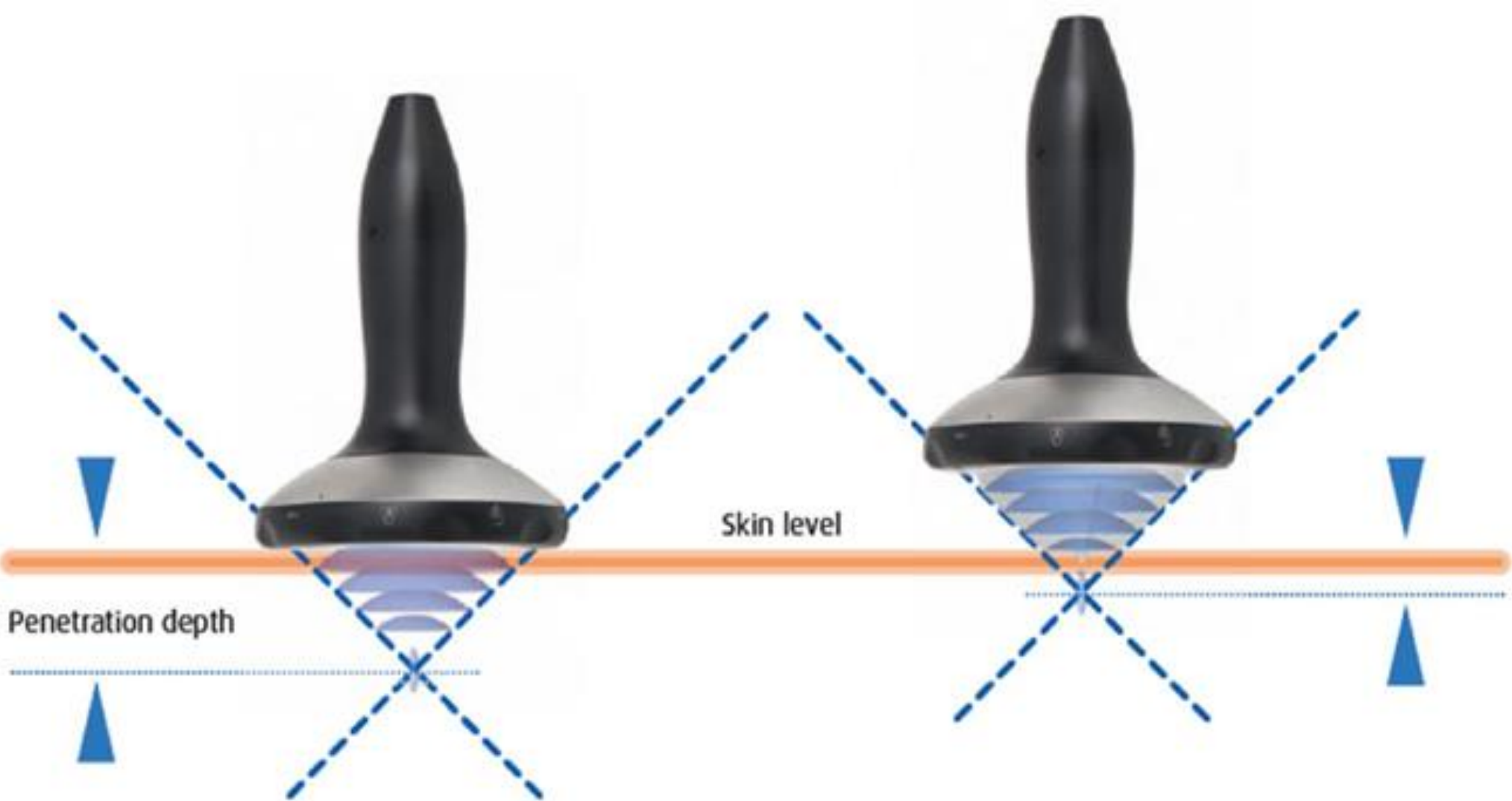


**Extracorporeal shock wave is GENERATED**

Return to the original shape.



Gel pad to adjust focusing depth



## Focusing depth is variable with gel pad

Install the gel pad to adjust focusing depth  
exactly at the target depth



Measure the fat with the manual fat measurer and install the pad  
around half of the measured thickness

To strengthen the elasticity by generating collagen in the dermis  
area with the adipocyte membrane broken effect, treat with the  
main pad 2,000 shot and 1,000 shot with the shallower depth

## Precaution

Extracorporeal shock wave can't pass through the air  
(it disappears in the air)

Apply enough ultrasound gel and remove the bubble in the contact area with gel pad and hand piece by turning the gel pad by hand



## Precaution

Apply ultrasound gel evenly on the skin and apply additional gel while operating prevent skin dryness



Press the trigger button or Footswitch after the pad is completely contacted with body



Treat one area around palm size first around 2,000 shots and then move to another area.  
It is recommended to leave the device for 10min. without operating but power on condition for the ventilation purpose.

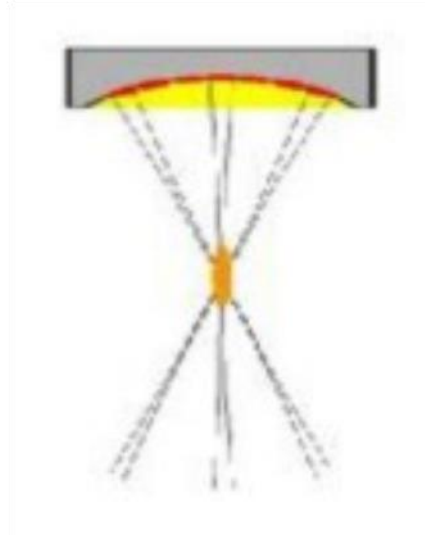
It takes around over 20 min. for abdomen area treatment so it is recommended to keep the client lying down on a bed.

Treat once a week



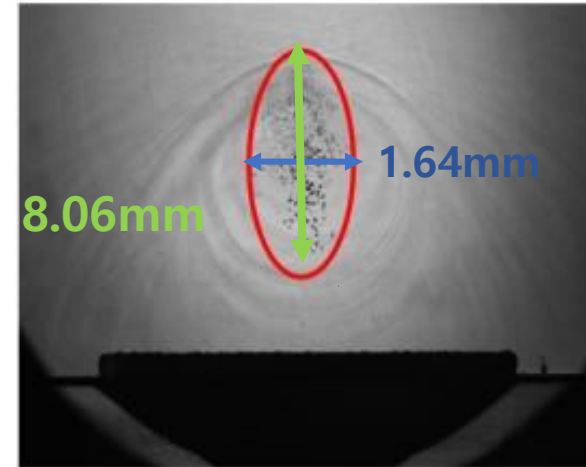
## PIEZO Electric effect

Extracorporeal shock wave  
have straightness

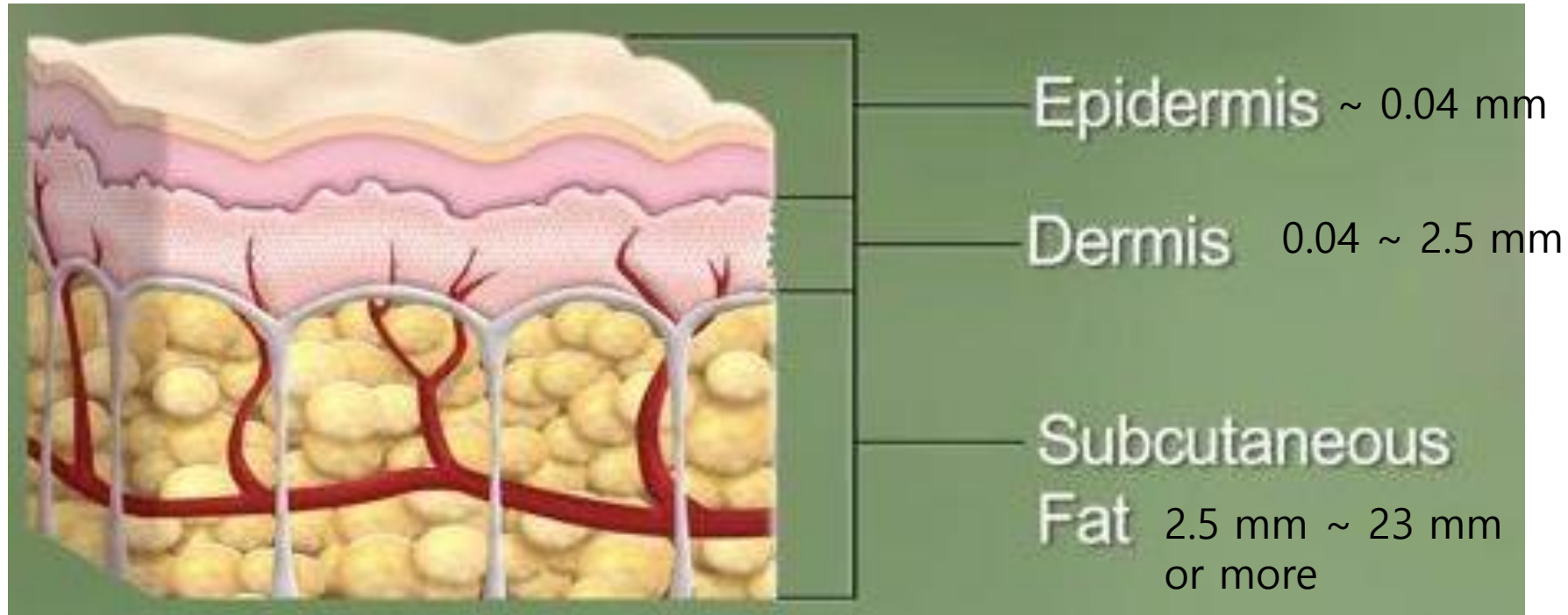


REMFAT Intensity "1" – 11MPa

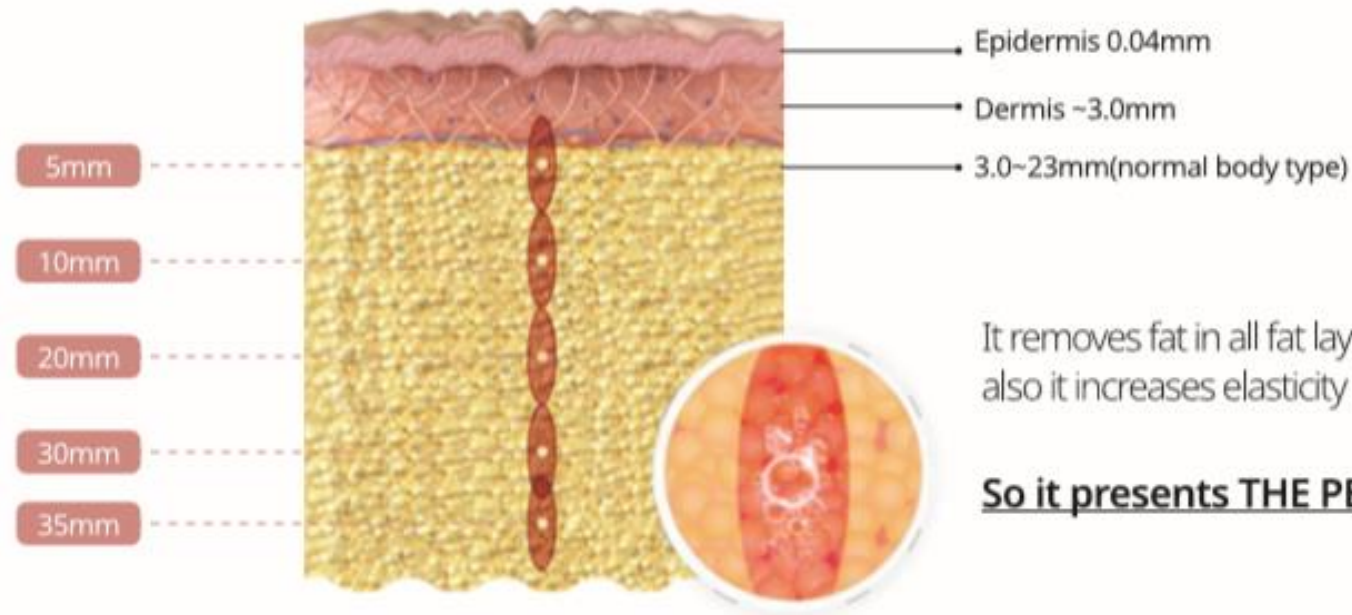
Bubbles are generated with the shock wave inside the body and then the shock wave hits them and collapses them. Due to the high power when they are collapsed, the lipocyte membrane is damaged.



# Layers of Skin for Normal person



## Lipocytes in the full fat layer are destroyed and the dermis layer has more elasticity



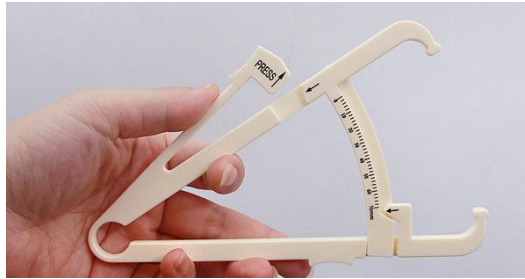
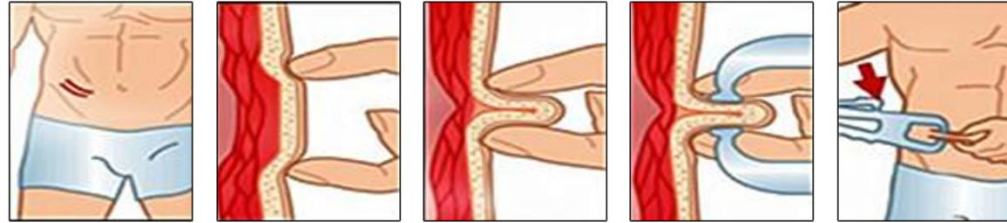
It removes fat in all fat layers even for the extremely obese and also it increases elasticity by stimulating the dermis area.

**So it presents THE PERFECT BODY CONTOURING EFFECT**

**Bubbles are made from one power release and one shot**



## Measuring FAT and Apply the proper thickness pad



**Body Fat Caliper**

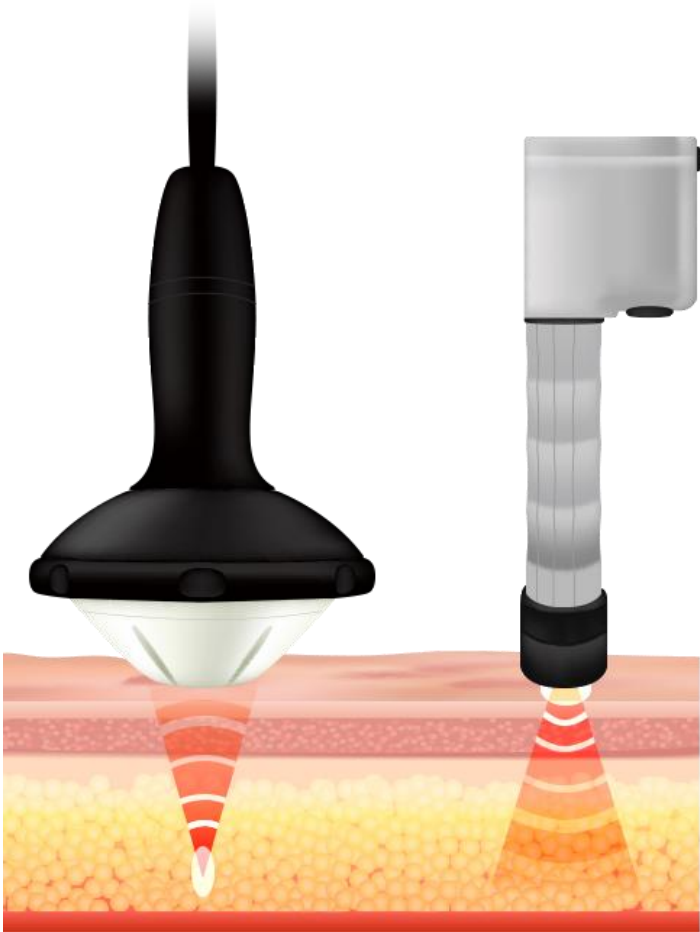
## **FAT Destroying Effect covering the full fat layer**

- REMFAT destroy Lipocytes in the entire Fat Layer

## **Elasticity effect**

- REMFAT stimulates the dermis layer and generates new collagen

Extracorporeal shock wave



Focusing Type

Radial Type



# Energy Flux Density

Focusing type is around 4 times more powerful than the Radial type

Radial E.S.W.T Working Pressure (Bar)	Energy Flux Density (mJ/mm <sup>2</sup> )	<b>REM-FAT LEVEL</b>	Energy Flux Density (mJ/mm <sup>2</sup> )	
1.5	0.03	0.1 ~ 1	0.032 ~ 0.092	· Relaxing muscle
2.0	0.06	2	0.113	· Soft tissue
2.5	0.11	3	0.138	· Trigger point pain
3.0	0.13	4	0.153	
3.5	0.16	5	0.182	
4.0	0.18	6	0.220	
4.5	0.20	7	0.238	· Achilles tendonitis
5.0	0.22	8	0.270	· Lateral epicondylitis
		9	0.320	· Shoulder tendonitis
		10	0.351	· Patellar tendonitis
		11	0.388	· Plantar fasciitis
		12	0.456	
		13	0.478	
		14	0.516	
		15	0.581	
		16	0.601	
		17	0.646	
		18	0.648	
		19	0.770	
		20	0.822	
		21	0.828	
		22	0.832	
		23	0.839	
		24	0.844	
		25	0.853	

Source : ISMST (international Society for Medical Shockwave Treatment)

## Focusing Type

### Strong points

- **Strong power supply to the fat layer** so it gives a powerful effect in a short time
- **Accurate targeting on the focusing depth** in the fat layer
- **No vibration from the hand piece** so the fatigue of operator is so low
- **Comparatively low noise**
- **No required maintenance service**
- **NO damage on the epidermis, No bruise, No edema**

### Weak points

- Hand Piece is a consumable, it's guaranteed for **5 mil. shots** and then Hand Piece should be purchased, its cost is relatively high

Others:

Wolf(Germany): 5 mil. Shot limit H/P: USD12,000

Ours:

REMFAT(Korea): 5 mil. Shot limit H/P: USD6,000

## Radial Type

### Weak points


- Power is unfocused so the shock is mainly on the surface and **gets weaker and weaker the deeper** it goes
- Do not know the depth of fat breaking
- High vibration from the hand piece causes the **operator's fatigue**
- **Noisy during operating** so it is required a **sound proofed room**
- **Required periodical maintenance** related to pump
- Can be epidermal damage

### Strong points

- Hand Piece price is relatively reasonable  
1mil. shot
- Pain: wide area muscle pain, knotted muscle

Radial Type Shock Wave Charge  
Per operating – one of clinic in Korea

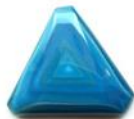
	Shot q'ty	1 session	3 sessions
Polymastia	4,000	USD100	USD242
Arm	4,000	USD100	USD242
Love Handle	4,000	USD100	USD242
Lower Abdomen	8,000	USD207	USD480
Thigh (inner, under of buttocks, outer)	4,000 per area	USD100 Per area	USD242 Per area
All Thigh	12,000	USD300	USD660
Calf	4,000	USD100	USD242

CELLULITE TONING 체외충격파 (셀룰라이트 토닝)	
	1회 3회
부유방 4000타	12 / 28만원
팔뚝 4000타	12 / 28만원
러브핸들 4000타	12 / 28만원
하복부 8000타	24 / 56만원
허벅지(안쪽/영립/바깥) 각 4000타	12 / 28만원
허벅지 12000타	36 / 80만원
종아리 4000타	12 / 28만원
	

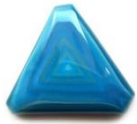
# THE Reasons you need to select REMFAT for obesity care



Strong Fat REMOVING Effect



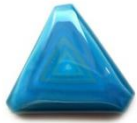
No epidermis damage



Accurate Focusing at the depth you want fat removing and widely remove fat around the focusing point



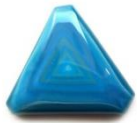
Low pain



Workable with extremely obese with 35mm pad



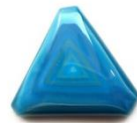
Two or three different depth pads are applied what capable of removing fat in all fatty layer – for obese people



New concept in the obesity market



Low fatigue rate of operator



Simple to operate

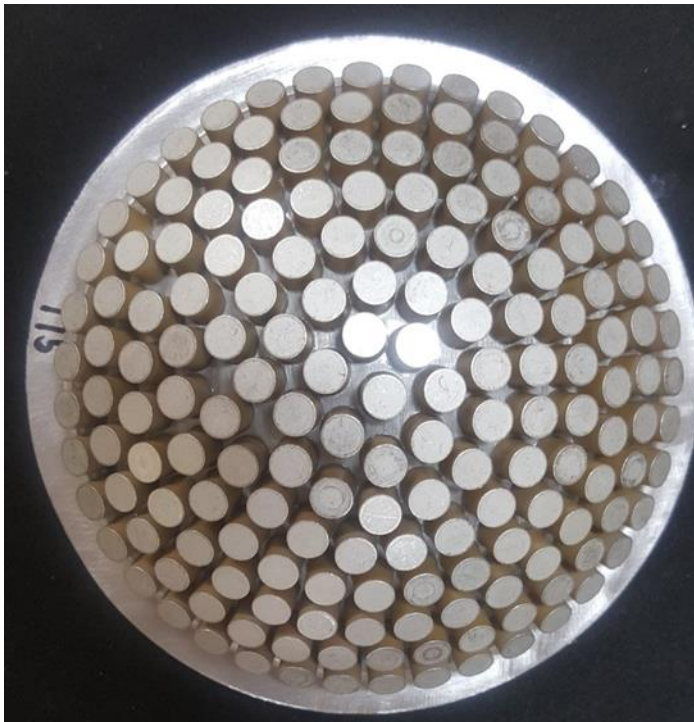
# Specialized technology for REMFAT comparing one PIEZO electron device

## K1MED REMFAT PIEZO CELL TYPE

### PIEZO CELL TYPE

Almost 200 pcs of Piezo Electrons are installed in Hand Piece

One Piezo Electron Size:  
Width 6mm, Thickness: 5mm



## Other company ONE PIEZO Electron type

Theoretically it is HIFU

One Piezo Electron Size:  
Width 90mm, Thickness: 5mm

It is 15 times bigger than our Piezo Electron



## REMFAT Piezo cell type comparing one PIEZO device

### REMFAT Piezo cell type



It is like almost 200 people shooting almost 200 marbles at the same time with the same power(same voltage 8,000 V) and they move same distance.

### One PIEZO TYPE



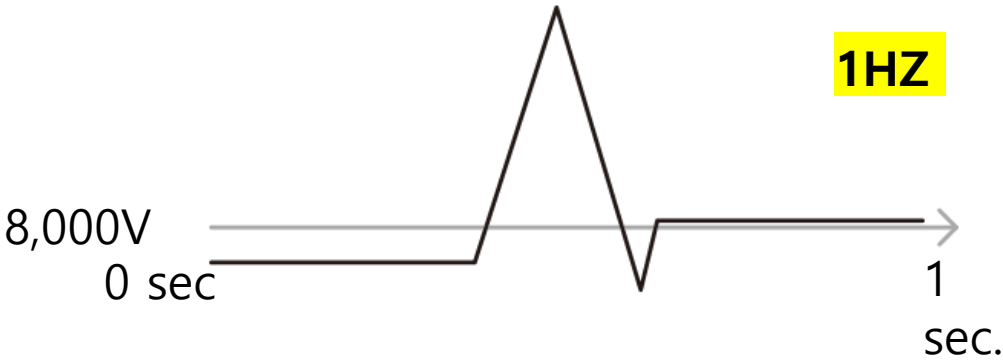
15 times bigger than Piezo electron  
PIEZO cell type

When one person shoot like the balling ball with the 1/3 power(2,500 V) with the shooting the marbles, it moves a little bit.

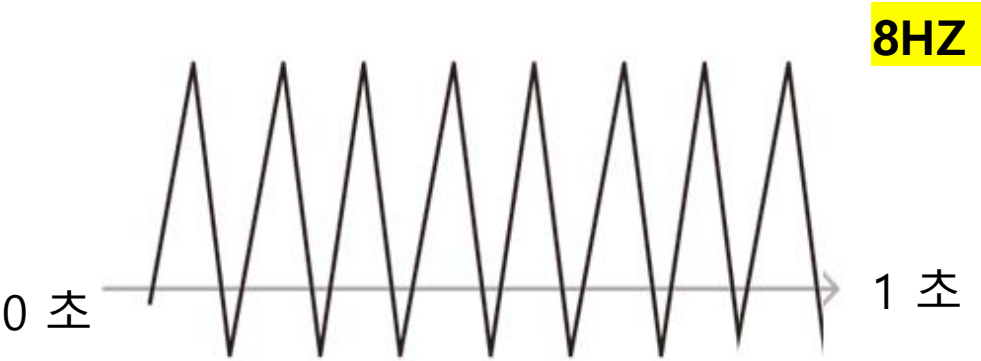
# Comparison of shot type for REMFAT and One PIEZO type

REMFAT

Apply 8,000V 1 time / 1 SHOT



Apply 8,000V 8 time / 8 SHOTS



8,000 V high voltage

Apply

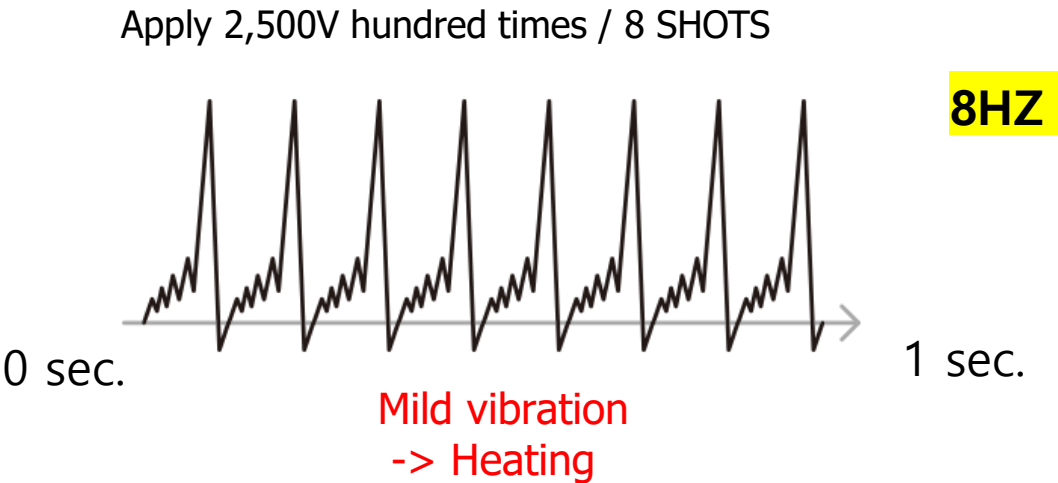
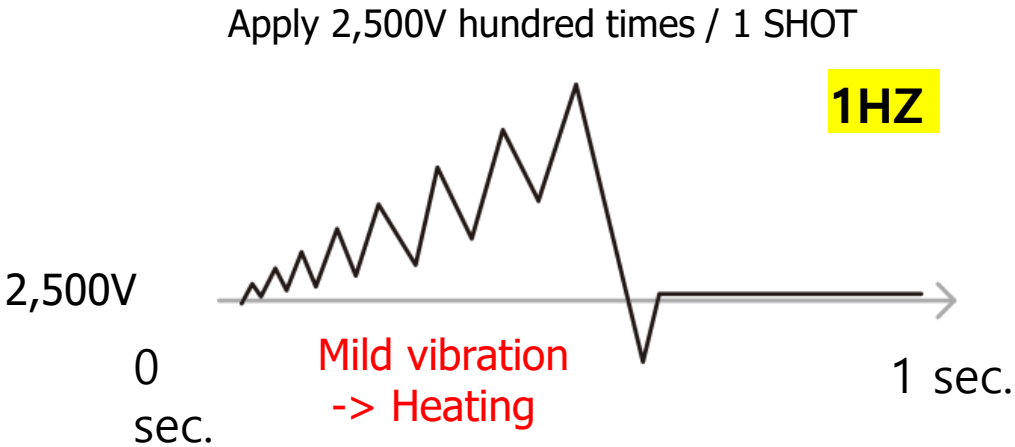
Around 200 pcs of Each of small piezo electron(width:6mm, thickness: 5mm)

Each of them are expanded

HFES Energy is out

Comparison of shot type for REMFAT and One PIEZO type

One PIEZO type



2,500 V

Apply

Thick and Big Piezo electron(Width: 90mm, Thickness: 5mm)

After several times 2,500 V voltage applied and millions of mild vibration is accumulated

=> can't be expanded with one time 2,500 V apply

One shot

# **One PIEZO type Problem**

Heat is generated due to the hundreds of small vibration

## **Problem to Device**

- Generate energy loss
- Piezo Electron surface damage
- Piezo electron life span shortened

## **Problem to Clients & Operator**

When you treat it by fixing it at the one area, it causes burning by the frictional heat on the skin surface so User should operate it in a rubbing way

- it makes the operator feel tired
- Can be the cause of burning and skin damage

	REMFAT
Output power	80Mpa
Applied Voltage	MAX. 8,000 V
Time for apply Voltage / Shot time	1 time / 1 shot
Durability	High Durability, Piezo electron isn't breakable easily
Technical Skill	Korea first Piezo cell type <ul style="list-style-type: none"> <li>- Hire the doctor's degree majoring ultrasound, he developed it and produced it.</li> <li>- For the stable high output power and working stability, we have our own piezo electron assembly technology.</li> <li>- Equip test facility to check out its power strength and guaranty the stable power level</li> </ul>
Skin surface damage	Treat like keeping the H/P at the one point for 3 to 5 seconds and the color of treated area change to a bit red
Unit price	USD20,000 ~ USD24,000

ONE PIEZO Electron type
Below 10Mpa, average 7 ~ 8Mpa 10 sessions of one Piezo electron treatment ≡ 1 session of REMFAT
MAX. 2,500 V
Continuous voltage apply / 1 shot
Weak durability: Piezo electron is easily broken due to the small vibration, before the shot is out, heat is generated on the surface  : it is needed rubbing to prevent burning
Around 5 Korean companies ITC, Waver etc.
If it stops at the one point, it makes burning. There can be abrasion and bruise.
USD20,000 ~ USD24,000

**PIEZO CELL TYPE & ONE PIEZO Electron type in Korea market**

PIEZO CELL TYPE



Wolf – PIEZO wave  
Germany



EMS – Swiss Piezo Clast  
Switzerland



K1MED - REMFAT

USD 36,000 – 40,000

USD23,000-25,000

ONE PIEZO Electron type



Waver - ZeusWave  
Korea

USD24,000



ITC – Ulforce  
Korea

USD20,000

# RENFAT

**NO Energy Loss, No Skin damage, No heat**

## PIEZO Electric

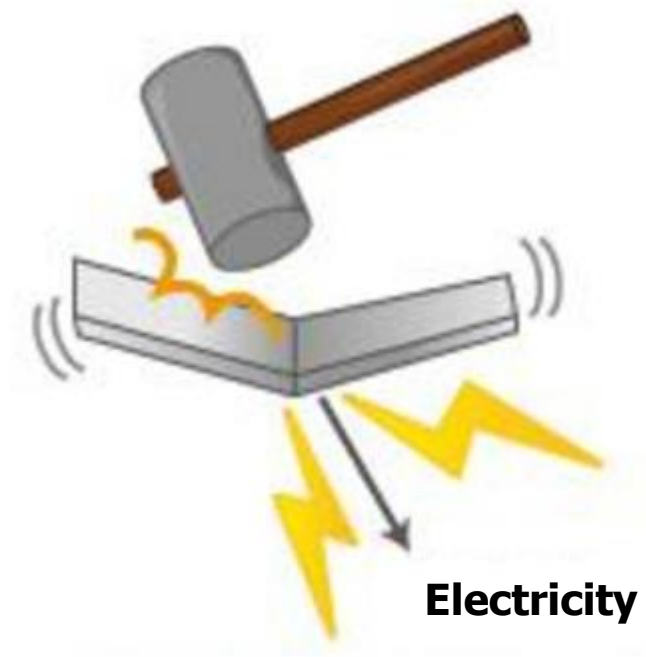
The PIEZO electric has + and -



The same **PIEZO Electric what is installed for Wolf and EMS is installed in the REMFAT** and it guaranties the best performance and high durability

**Piezoelectric Effect Vs. Inverse Piezoelectric Effect**

**shock**

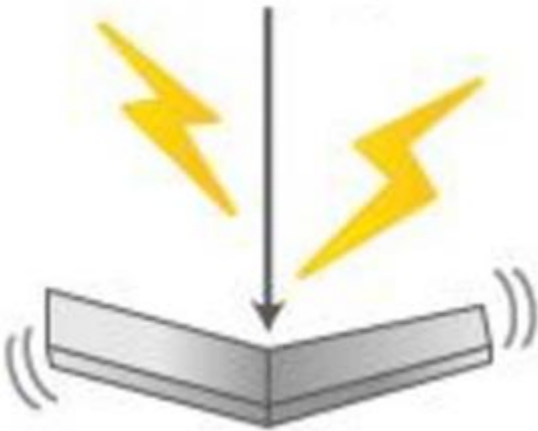


**Electricity**

**Piezoelectric Effect**

**REMFAT**

**Electricity**



**shock**

**Inverse Piezoelectric Effect**

## Device using Piezoelectric Effect in the life

Give Shock to the piezo electron when button is pressed by finger



Piezo Electron is CONDENSED



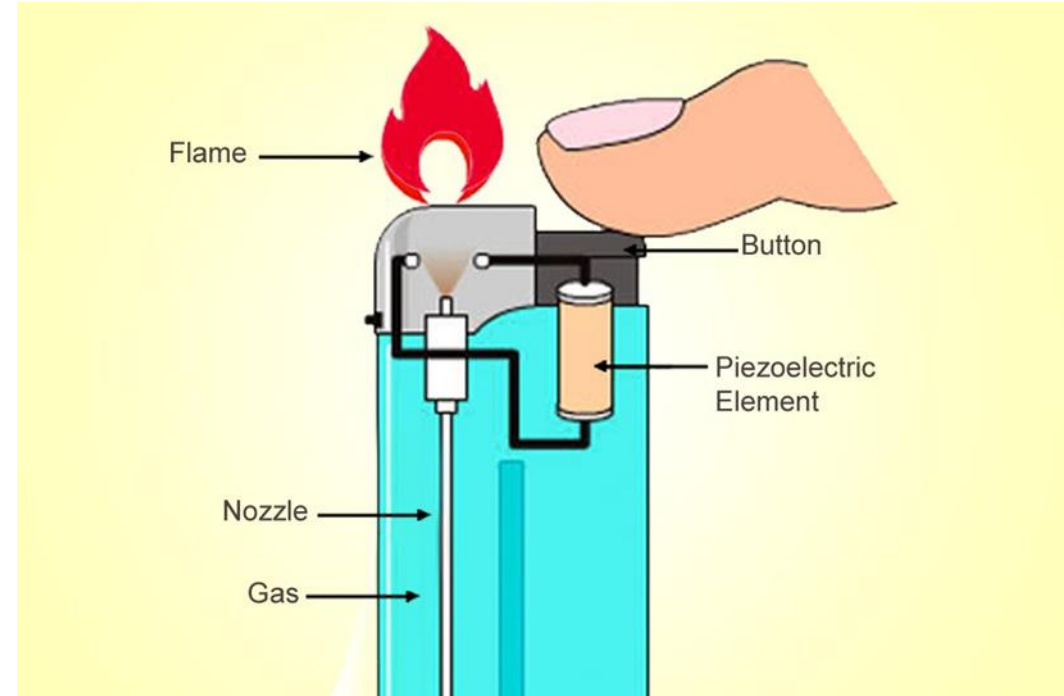
Due to the change of molecular arrangement, voltage is generated



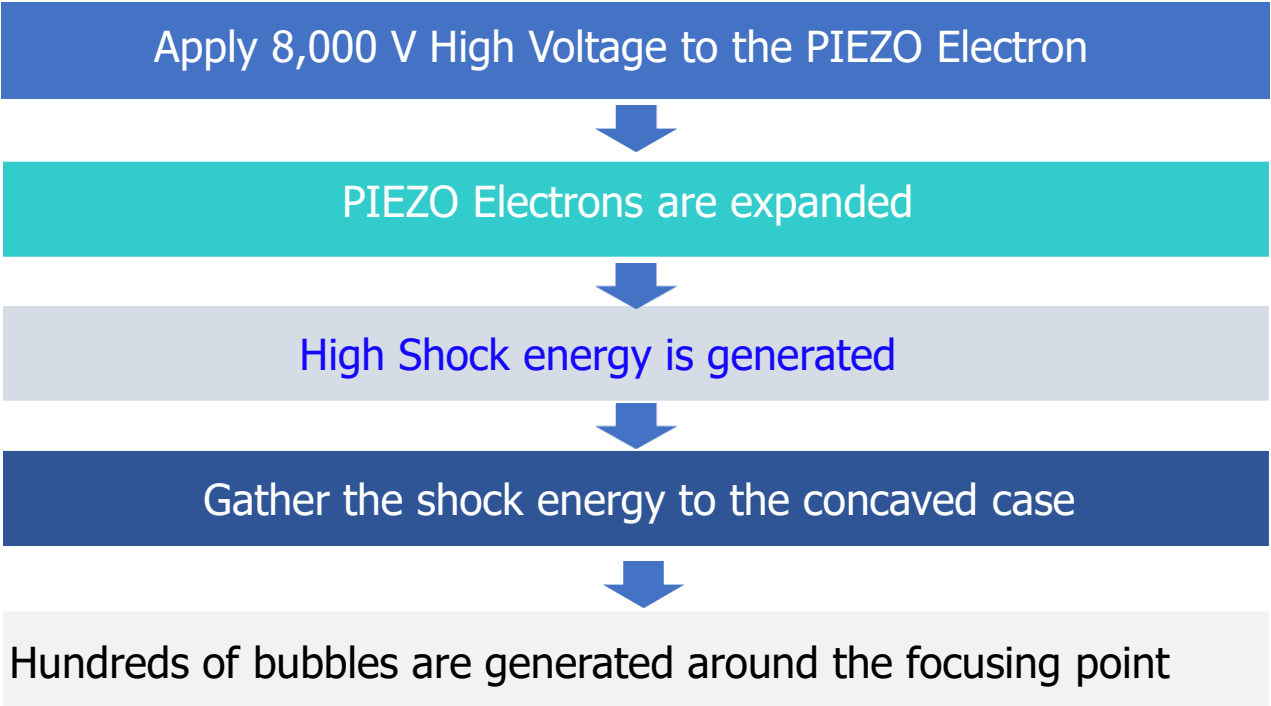
Gas is used as the catalyst for generating fire



FIRE



Reverse Piezo Effect - REMFAT



Damage the adipocyte membrane by the energy when the bubbles burst



Stimulate in dermis and break the old and loosen collagen fiber

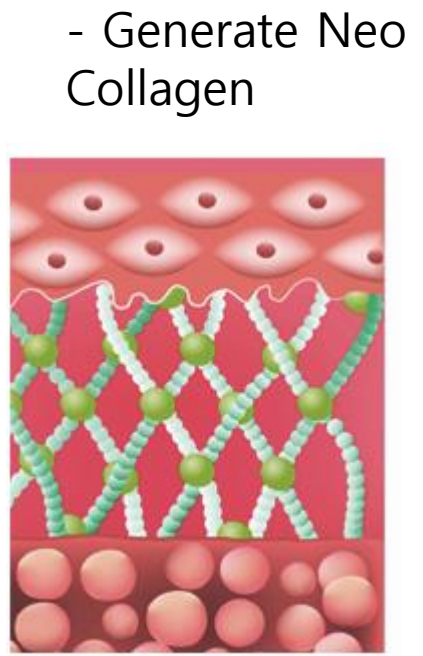
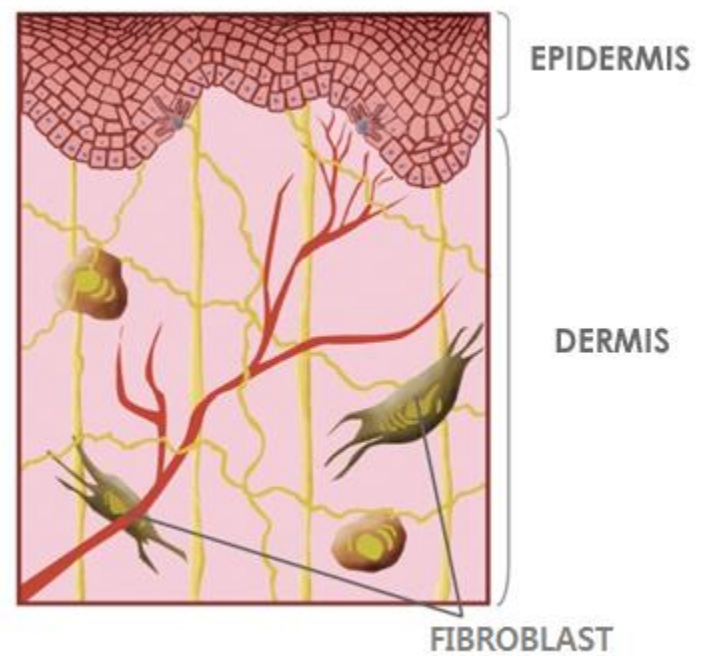
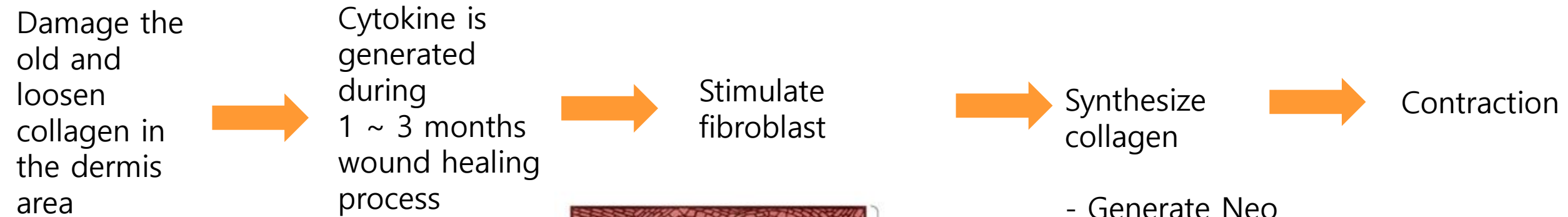


Soften the harden cellulite area and destroy the adipocyte membrane so resolve cellulite



Neo Collagen generation

**Gradual Lifting effect by Generating neo collagen**



**Gradual Lifting effect for around 3 ~6 months AFTER REMFAT TREATMENT**

Clinical test

Term: May 3, 2019 ~ Jun 13, 2019

Treated area	Testee	Before	After	Sessions	Total Shot no. (1session)	Intensity	Frequency	Pad (mm)	REMARK
Abdomen	A	98cm 38.5 inch	93cm 36.6 inch	8	35,800 shot (3,000 ~ 5,000)	25	8HZ	20 – 7 sessions 30 -1 session	
	B	92cm 36.2 inch	87cm 34.2 inch	8	38,000 shot (4,000~5,000)	10~13 20 25 25 13->20		20-7sessions 5 – 1 session	
	C	85cm 33.4 inch	83.5cm 32.8 inch	4	20,000 shot (5,000)	25		10	
Arm	D	27.5cm 11 inch	26cm 10.2 inch	5	25,000 shot	15 19 18 18 18		5 – 3sessions	
	E	26.5cm 10.4 inch	25.5cm 10 inch	5	25,000 shot	8 ~ 10		5	

A

98cm -> 93cm



A



B



B

92cm -> 87cm



C



85cm -> 83.5cm



E

26.5cm -> 25.5cm



# Protocol

## 1'st SINESON

Pre heat the fat area with 300W high power Radio frequency device to maximize the fat destroying effect

## 2'nd REMFAT

Destroys fat cells

## 3'rd V-Max

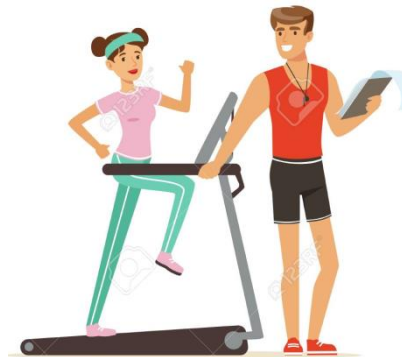
Melting the fat with 4.5mm & 9mm HIFU

## 4'th SINESON

Massage the lymphatic area to accelerate the fat discharge

## 5'th Exercise

Accelerate the fat discharge



## The mechanism to generate HFES(High Focused Extracorporeal shock wave)

Adopting **Inverse Piezoelectric**, it generates a strong shock wave energy that is applied to the body through the pad(depth control pad) which is most proper for the treatment area and body type, we can expect a **powerful**

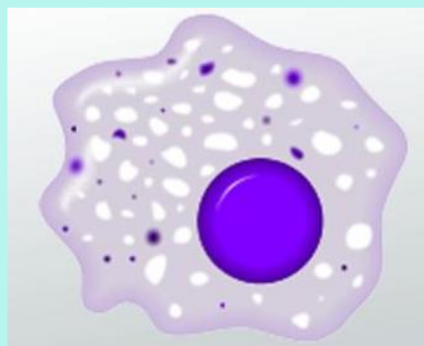
**FAT Breaking down** effect by focusing the extracorporeal shock wave at the accurate depth.

# Boost the fat discharge by accelerating lymph circulation

## Destroy Fat with REMFAT

### Discharge the residue of lipocyte cytoderm and lipid through lymph and blood circulation

The destroyed fat is eaten by macrophage(its one of work is purify inside of body) and it is discharged through lymph circulating system



macrophage

Macrophages eaten FAT Cell residues are found in the lymph biopsy after fat care.  
It is the proof that the residues from the broken lipocyte are hung on the lymph nodes to be discharged through the lymphatic vessel

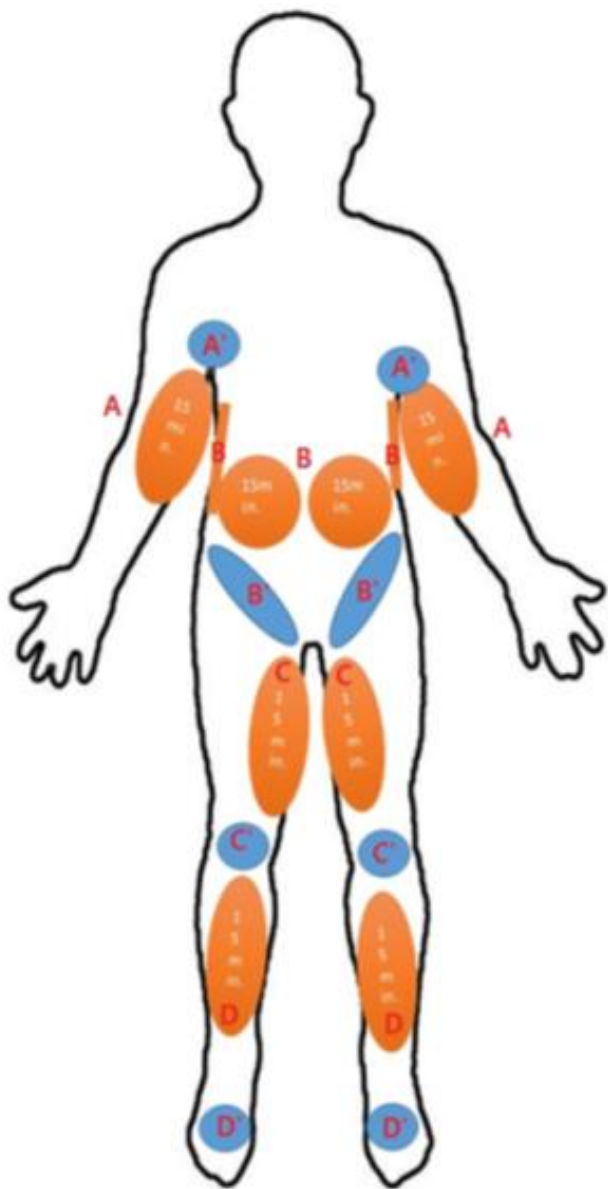


Accelerate lymph circulation  
=> conduct lymph circulation massage  
exercise and drinking 2 L water every day

The fat begin to discharge in earnest **after 4 weeks of REMFAT care**, depends on the person it can take **8 to 12 weeks** after REMFAT care

※ It is same for high price range body contouring device like Liposonic, Vanquish

**Lymph circulation care focusing on lymph nodes highly increase its effect and show the result in a shorten time**



Destroy fat with  
REMFAT



Discharge FAT  
with SINESON



## **If fat discharge care isn't conducted?**

### **Natural Body Circulation System**

**Some of destroyed lipocyte -> Discharge through lymph vessel**

### **FAT RELOCATION**

**Some of destroyed lipocyte -> Resorption and accumulate in the body again**

# The PENTAPLEX Lipolysis program from one Korean Famous Clinic

Step 1 and 2 are for fat destroy  
Step 3 to 5 are for fat discharge

Step 1  
Fat Pre-Heating

Step 5  
Medical SPA

To increase the fat  
discharge



Step 2  
Destroy and melt Lipocyte

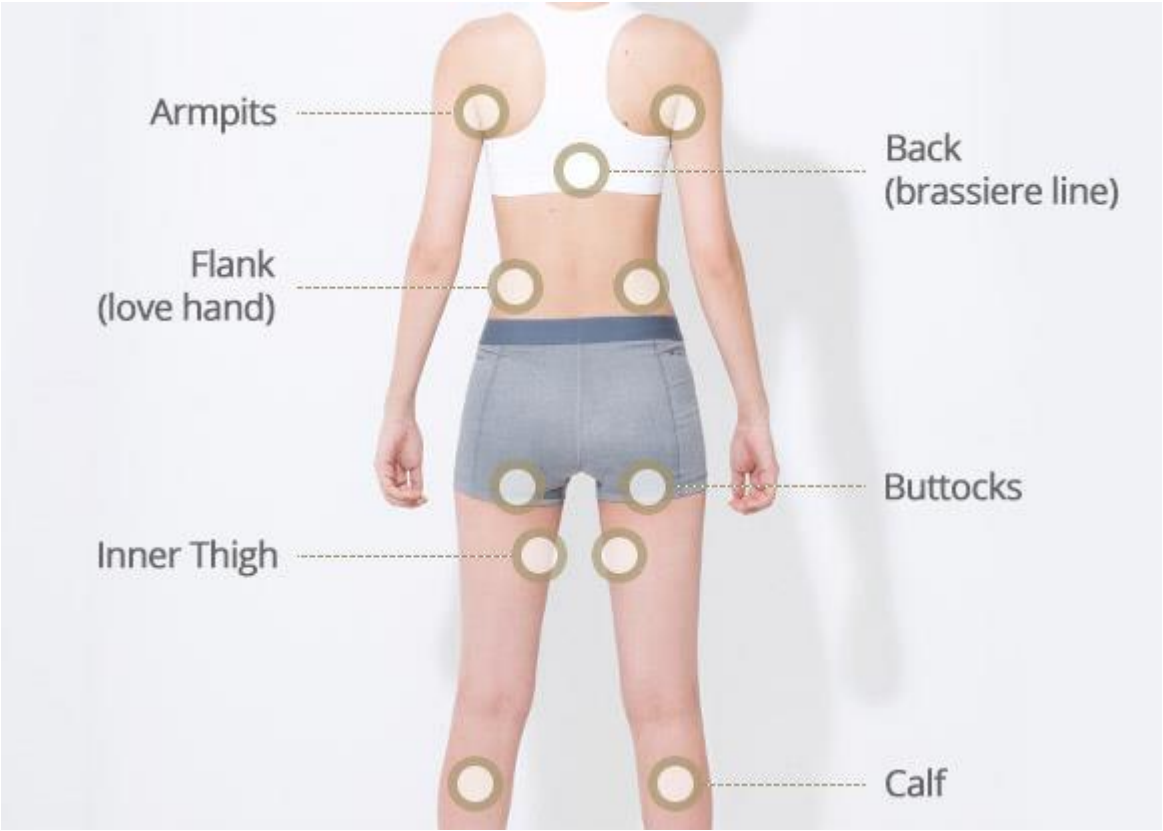
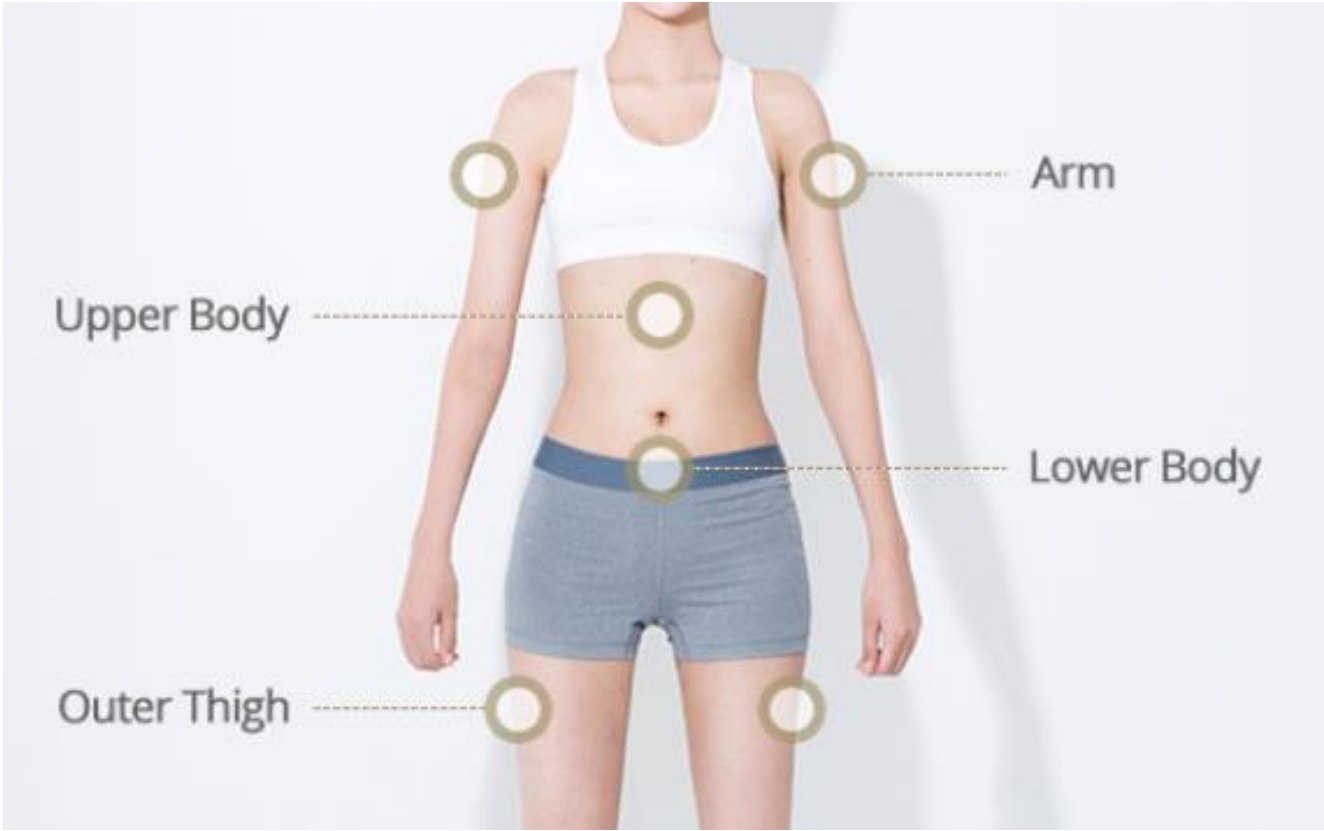
Step 3  
FAT Massage

to discharge the melted fat, this  
step for activation of lymph and  
blood circulation

Step 4  
Premium Exercise

Activate the remained fat  
discharge and for body balance

Treatment area with REMFAT



# PHYSIOTHERAPY



MPS, Myofascial Pain Syndrome



Rotator cuff syndrome



Tennis Elbow



Golf Elbow



Dequervain



Trigger Finger



Knee joint tendinitis



Plantar fasciitis



Achilles Tendinitis

